



BEFORE WE GET STARTED

Register your attendance.

Complete this form for each session you attend.

Session numbers
are in the program.

CAP
CON
2024



Rosters

A close-up photograph of coral or sea anemone tentacles, showing their intricate, branching structure. The colors range from deep purple to bright blue, with some lighter, almost white, tips. The background is dark and out of focus, emphasizing the texture and form of the tentacles.

**SO MUCH
BIOLOGY,
WHERE TO
START**



WHO AM I?

Deserae Good

Argyle High School since 2011

**Academic Science Coach since
2012**

**Competed at State each year
in 3A, 4A, and 5A**

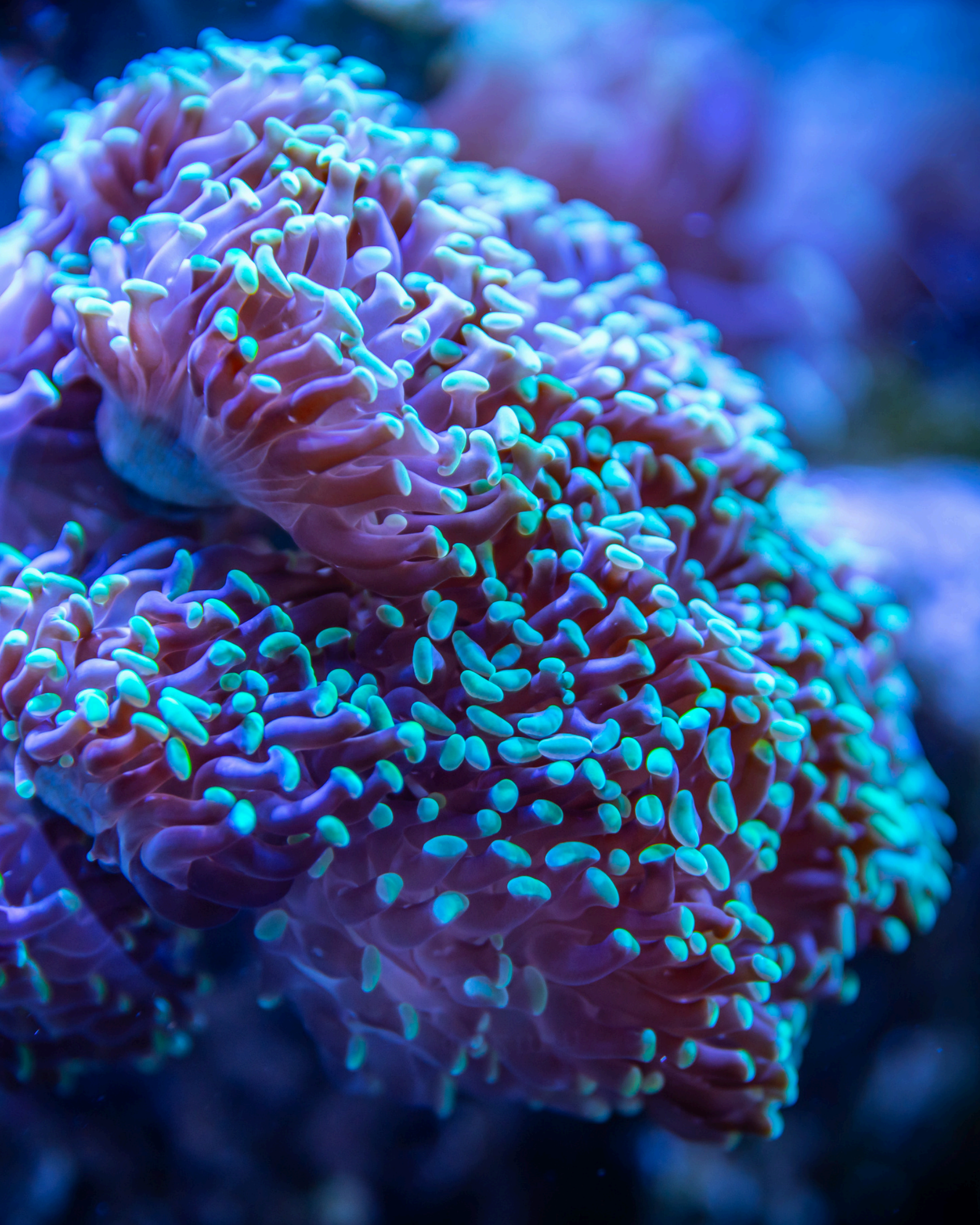
BUILDING A TEAM

Start recruiting 8th graders

- **Talk at incoming parents night**
- **Setup a table at freshmen schedule walk day**
- **Have your seniors/juniors talk to the incoming classes**

Identify advanced 9th graders (just because they have high grades doesn't mean they will be good at UIL)





CLASSES

9th-Honors Bio
10th-AP Bio & Honors Chem
11th-AP Chem & AP Phy 1
12th-AP Phy C

PREPPING

AP Class Notes

Google Classroom

Shared Drive

Study Binder

Dashboard

Published Courses (3)

UIL Science

... > AHS Science Team > Biology Mater

Type ▾ People ▾ Modified ▾

Name ↑ Own

- Review Material
- + 2023 UIL Test Topics
- + 2024 UIL Test Topics
- ☰ Biology Review Document
- 📁 Copy of CRISPR/Cas9 and Gene Repair

Meet

Join

Visible to students

Upcoming

No work due soon

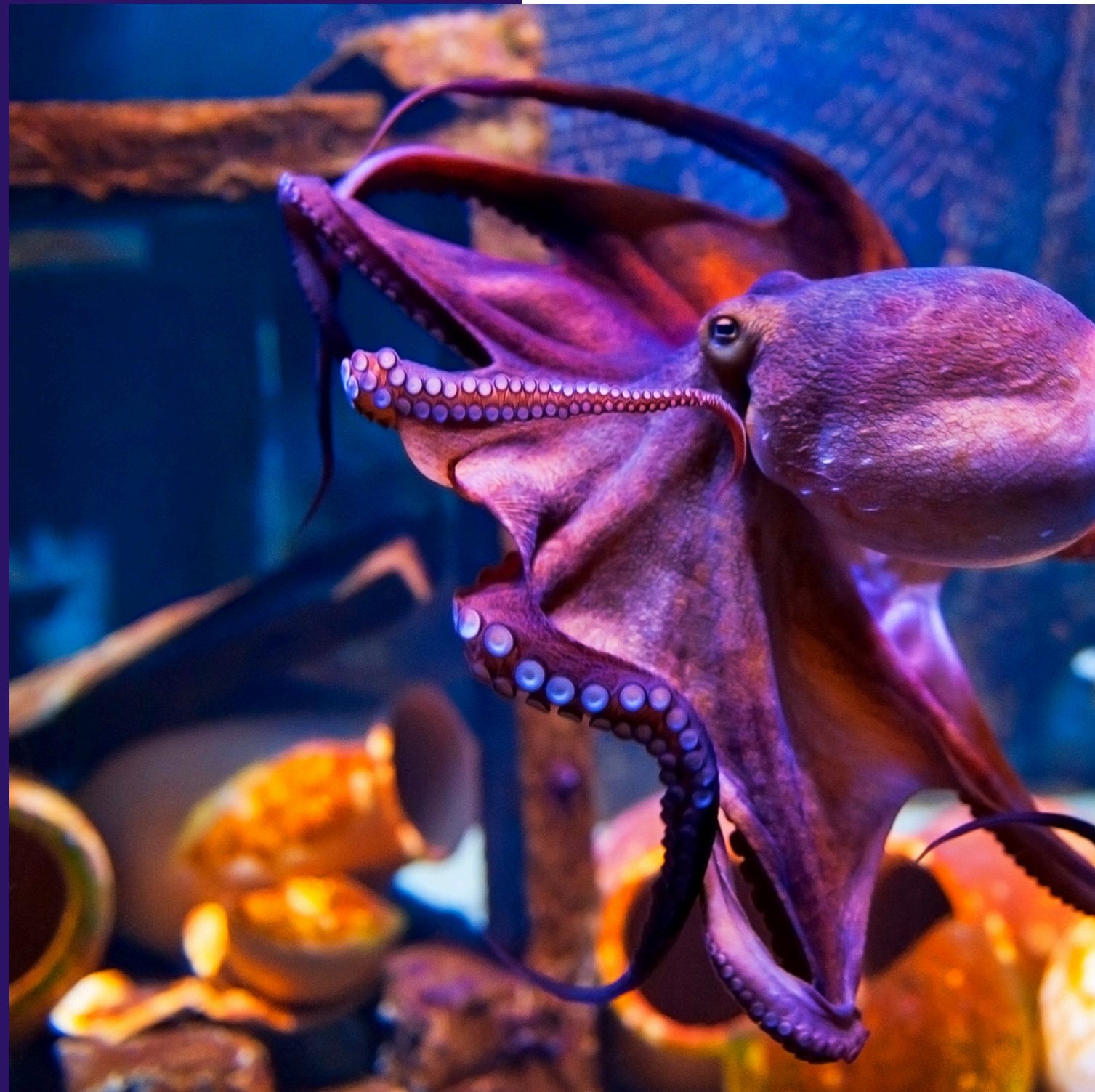
View all

Announce something to your class

Deserae Good
May 31 (Edited May 31)

Please note the attached link to get to the classr
share the link or any contents shared with you. S
faculty/student use only and others are works c

AHS Science Team



WHERE TO FIND THE INFO

OpenStax

BioLibreText

Lumen Learning

AMBASSADORS OF THEIR OWN LEARNING

11th/12th

- **Let them tell you what they need**
- **Have them teach the others, you do not need to be responsible for passing all the knowledge on**



LET THEM LEAD

Get the kids creating the study materials

- Quizlets
- Slides
- Summary diagrams
- Review Documents
- Disease charts
- Test breakdowns



EXAMPLES

Plants

Parasites/Diseases

CRISPR

Types of Fermentation

2024 Test Topics

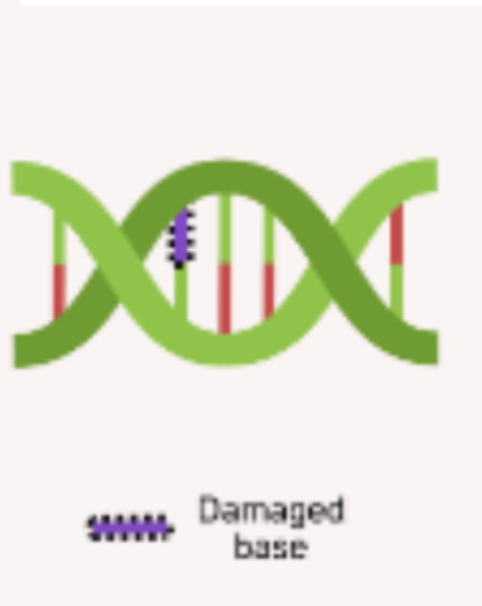
Biology Review Document



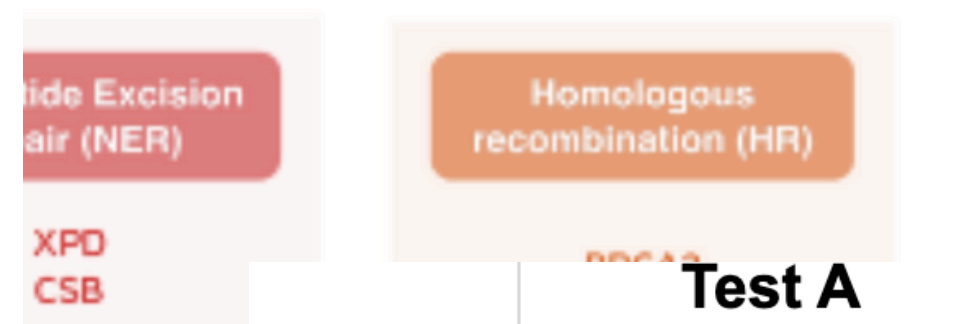
***Links not viewable by others**

Science Review

- [CDC](#)
- [Biochemistry](#)
- [Cell Structures](#)
- [Metabolism](#)
- [Photosynthesis](#)
- [Cellular Respiration](#)
- [Cell Cycle](#)
- [Tissues](#)
- [Body Systems](#)
- [Genetics](#)
- [Plants](#)
- [Bacteria](#)
- [Viruses](#)
- [Evolutionary Major Events](#)
- [Supergroups](#)
- [Classification](#)
- [Ecology](#)
- [Biogeochemical Cycles](#)



Common Name	Scientific Name	
	Plasmodium- P. vivax, P. ovale, P. malariae, and P. falciparum.	Chills, Fever, Sweats
	Lymphatic filariasis	Most cases are systemic; long-term damage to the lymphatic system; swelling
Fever	Giardiasis	Fatigue, cramps, diarrhea
Leishmaniasis	Bilharzia	skin turns black
		- a fever. - swollen lymph nodes - a headache. - muscle aches and pains - sore throat.



Bacteria with the Lac Operon

Several Enterobacteriaceae genera including E. coli and Klebsiella all have the ability to utilize lactose as a carbon source. They do this through the use of the Lac operon, which codes for the enzyme β -galactosidase which is coded for the more useful carbohydrates.

	Test A	Test B	District	Region	State
1	Cell Structure-proteins designated for export synthesized	Cell structure-membrane except; having single bonds make fatty acids more fluid	Viruses-lysogeny incorporate viral genome	Macromolecule-triglyceride found in adipocyte	Transport-symport; active
2	Punnett-second filial generation	Genetics-mutation; phenylalanine to histidine missense	Body-acetylcholine is to nervous system estrogen is to endocrine system	Genetics-CRISPR/Cas9; cellular repair; homology directed repair	Domains-chordates four general characteristics; notochord; pharyngeal slits; post anal tail; dorsal nerve cord
				Bacteria-Vibrio cholera two circular	



PRACTICE PRACTICE PRACTICE

Old Test Folder

TMSCA

Virtual Challenge Meets

***Test Link not viewable by others**



THANK YOU!

I hope you were able to take something away
from today!

If you have questions my email address is:
deserae.good@argyleisd.com



THANK YOU FOR ATTENDING

Registration link,
presentations and handouts
are available on the website.

*Remember to register your
attendance for each session.*

CAP
CON
2024



Handouts & More

