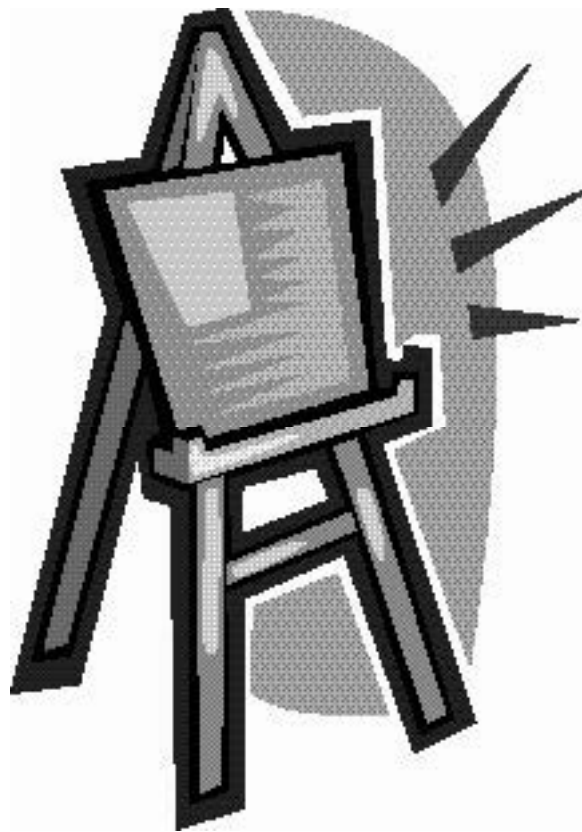


**INVITATIONAL 2018-2019**

**A+ ACADEMICS**



University Interscholastic League



# Art Contest

grades 4, 5, & 6

**DO NOT OPEN TEST  
UNTIL TOLD TO DO SO**

**2018-2019 Invitational Art Test Part B - Grades 4-6**  
**Art Elements Section**

1. As a symbol in *Forest Scene* reminding viewers that earthly life does not last, the artist used
  - a. gray storm clouds.
  - b. the small size of human figures.
  - c. moving water.
  - d. fallen tree trunks.
  
2. *Madonna and Child with Angels* was created with \_\_\_\_\_ on wood.
  
3. An artist might choose to create a very large painting to
  - a. fit a large public building.
  - b. strengthen the work's impact on viewers.
  - c. show that the subject is important.
  - d. all of the above
  
4. The artist added a feeling of movement to *Train Coming in - Canyon, Texas* with
  - a. triangle shapes.
  - b. a rhythm of warm color.
  - c. swirling brushstrokes.
  - d. diagonal lines.
  
5. The artist used a \_\_\_\_\_ shape to structure the composition of *Portrait of the Duchess de Montebello with her Children*.
  
6. Colors of flowers in *Bouquet of Flowers in a Terracotta Vase with Peaches and Grapes* are mostly neutral and
  - a. cool.
  - b. unnatural.
  - c. warm.
  - d. complementary.
  
7. Living creatures are important in each of these paintings except
  - a. *Jack*.
  - b. *The Kiss (Le Baiser)*.
  - c. *Midsummer Twilight*.
  - d. *Cabin Fever*.
  
8. \_\_\_\_\_ is used to lead viewers through *Anvers, L'entrée du Port (Entrance to Port of Anvers)*.

9. To help give *The Prefect Raffaele Raggi* a casual feeling, the artist used
- soft, feathery brushstrokes.
  - the sitter's pose.
  - unclear details.
  - watercolor paints.

### True/False

10. A man painted as a small figure near the top of a painting looks closer than one painted as a large figure near the bottom of the picture.
11. The brushwork used to create *Saint John the Baptist Preaching in the Wilderness* gives the work a smooth, polished look.
12. Contrasts of light and shadow are used in *Study in Grey* mainly to create drama and tension.
13. Because of the large figures in the foreground, *Landscape with Peasants* can best be described as a group portrait.
14. A rhythm of shapes helps tie together different parts of the composition of *Apple Harvest*.
15. Realistic detail is more important in *Still Life with Fruit* than in *Still Life with a White Mug*.

### Art History Section

16. What was the nationality of artist Richard Parkes Bonington?
17. A painting by Anton von Werner is most likely to show a
- still life image.
  - picture of family life.
  - scene of war.
  - peaceful landscape.
18. A graceful and decorative painting style that developed during the Baroque period is called \_\_\_\_\_.
19. The type of brushwork most characteristic of Carlo Dolci's personal painting style is
- bumpy and textured.
  - light and sketchy.
  - thick and rough.
  - smooth and polished.

20. Diaz de la Peña's first job as an artist was
- illustrating books.
  - painting porcelain.
  - creating sculptures.
  - designing wallpapers.
21. Which work was painted earlier, *The Three Umbrellas* or *The Basket Chair*?
22. Jean-Baptiste Pater was an official member of the
- French Academy of Painting.
  - National Academy of Design in New York.
  - German Academy of Arts.
  - Hudson River School.
23. Diego Rivera took his first art classes in
- France.
  - Italy.
  - the United States.
  - none of the above
24. Each of these Italian artists worked in the city of Florence except
- Bronzino.
  - Catena.
  - Giovanni.
  - Lippi.

### **True/False**

25. Kehinde Wiley's mother encouraged his interest in art.
26. Rococo was the painting style that most influenced portraits created by Hamilton.
27. *The Fourteenth of July* was painted as a memorial to honor a battle fought during the artist's service in the French army.
28. Most of the works painted by Hans Memling have very lively, playful moods.
29. The Industrial Revolution took place during the Modern period of art history.
30. Hans Hofmann's painting was strongly influenced by the Fauvist and Cubist styles that developed while he was in Paris.

**2018-2019 Invitational Art Test - Grades 4-6  
(Part B)**

**Answer Key**

<b>Elements</b>			<b>History</b>		
1.	d	(37)	16.	British	(47)
2.	tempera & gold (leaf)	(23, 67)	17.	c	(51)
3.	d	(15)	18.	Rococo	(11, 30)
4.	c	(60)	19.	d	(34)
5.	pyramid [or] triangle	(46)	20.	b	(49)
6.	a	(44)	21.	<i>The Basket Chair</i>	(53, 58)
7.	c	(55)	22.	a	(39)
8.	(warm red) color	(50)	23.	d	(61)
9.	b	(32)	24.	b	(26)
10.	F	(10, 18)	25.	T	(66)
11.	T	(42)	26.	F	(45)
12.	F	(57)	27.	F	(59)
13.	F	(35)	28.	F	(25)
14.	T	(54)	29.	T	(10, 40)
15.	T	(38, 43)	30.	T	(63)

---

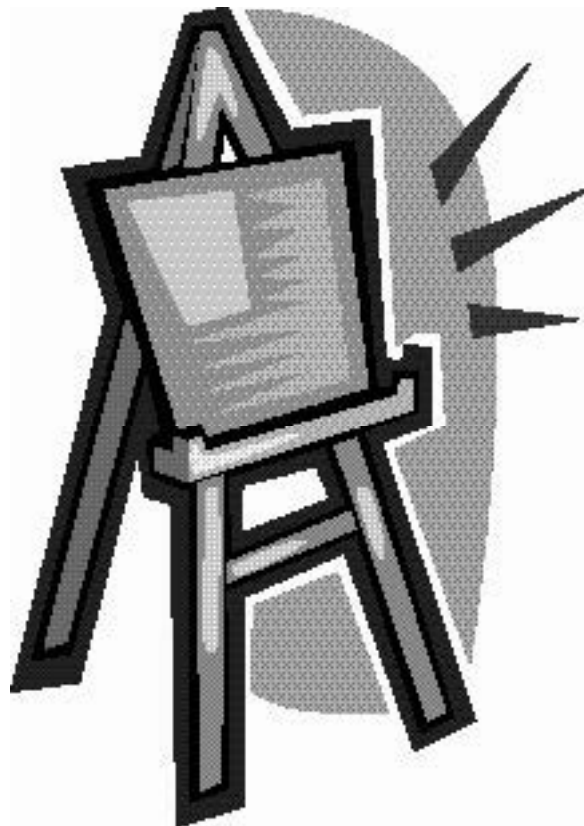
Numbers in parentheses are page numbers where answers can be found in the *Art Smart Bulletin* for 2017-2018 and 2018-2019. Correct spelling is not required for short answers.

**INVITATIONAL 2018-2019**

**A+ ACADEMICS**



University Interscholastic League



# Art Contest

grades 7 & 8

**DO NOT OPEN TEST  
UNTIL TOLD TO DO SO**

**2018-2019 Invitational Art Test Part B - Grades 7-8**  
**Art Elements Section**

1. \_\_\_\_\_ is a cool primary color.
2. *Le Roi à la Chasse [The King at the Hunt]* and *The Prefect Raffaele Raggi* are most different in their
  - a. use of color.
  - b. point of view.
  - c. attention to detail.
  - d. subjects' expressions.
3. Horizontal lines are used to create a feeling of peacefulness in
  - a. *Study in Grey*.
  - b. *Forest Scene*.
  - c. *La Siesta*.
  - d. none of the above
4. Which original painting is smaller, *Jack* or *Apple Harvest*?
5. The artist used light in *Madonna and Child with Angels* to
  - a. create dramatic contrasts.
  - b. focus attention on the most important figures.
  - c. suggest three-dimensional form.
  - d. show a variety of textures realistically.
6. To draw viewers through the image and into the background of *Bridal Veil Meadow, Yosemite*, the artist used
  - a. bright light.
  - b. diagonal lines.
  - c. warm color.
  - d. a rhythm of visual frames.
7. *A Young Woman and Her Little Boy* was painted with \_\_\_\_\_ on \_\_\_\_\_.
8. In which of these scenes did the artist pay most attention to realistic details and textures?
  - a. *The Three Umbrellas*
  - b. *Soldiers Playing Dice*
  - c. *The Basket Chair*
  - d. *A Fête Champêtre During the Grape Harvest*

9. The artist added visual interest to *Bouquet of Flowers in a Terracotta Vase with Peaches and Grapes* by
- including small living creatures.
  - using a contrast of warm and cool color.
  - showing the boards of the wall in the background.
  - painting with loose brushstrokes.

### True/False

10. Clouds in the skies of *Anvers, L'entrée du Port (Entrance to Port of Anvers)* help give the image a dramatic mood.
11. A rhythm of color helps create a unified composition in *The Finding of Moses*.
12. Allegories and illustrations of Bible stories belong to the same general subject group.
13. In the composition of *Portrait of the Duchess of Montebello with her Children*, a geometric shape is used to help focus attention on the mother.
14. Texture and detail are more important than color and brushwork in *Cabin Fever*.
15. Small figures of people are included in *River Landscape* to suggest mankind's unimportance in comparison to nature.

### Art History Section

16. Which of these works was painted by a French artist?
- The Kiss (Le Baiser)*
  - Virgin and Child with the Infant Saint John the Baptist*
  - The Gypsy Princesses*
  - none of the above
17. *Midsummer Twilight* pictures a real place located in which country?
18. Which of these artists is best known for painting still lifes?
- Veronese
  - van der Neer
  - van Walscapelle
  - von Werner
19. Which type of techniques to show realistic perspective did artists develop first, scientific or atmospheric?



20. Paul Kane learned to paint by
  - a. copying works of earlier artists.
  - b. working with Hudson River School painters.
  - c. studying with his father.
  - d. enrolling at the Pennsylvania Academy of Fine Arts.
  
21. Did Chardin or Boudin paint at an earlier time?
  
22. *Landscape with Peasants* was painted by a member of the
  - a. Hudson River School.
  - b. French Academy of Painting.
  - c. Impressionist group.
  - d. Dutch Protestant church.
  
23. Hugh Douglas Hamilton was the son of
  - a. an ambassador.
  - b. a painter.
  - c. a goldsmith.
  - d. a wigmaker.
  
24. Jan Brueghel the Elder was well-known for
  - a. using thick paint to add character and substance to objects.
  - b. creating realistic compositions from sketches.
  - c. painting with muted and neutral colors.
  - d. capturing the effects of sunlight on snow.

### **True/False**

25. The mood of *Portrait of a Man with an Arrow* is characteristic of most of the artist's works.
  
26. Hofmann's work and teaching contributed to the development of Abstract Expressionism.
  
27. The materials used to create *Portrait of a Woman* were the same ones artists had been using long before the Renaissance began.
  
28. The style of painting known as Neoclassicism developed during the Baroque art history period.
  
29. Fra Filippo Lippi's painting career was supported by the rich and powerful Medici family.
  
30. *Train Coming in - Canyon, Texas* was painted by one of the first American artists to create abstract works.

**2018-2019 Invitational Art Test - Grades 7-8  
(Part B)**

**Answer Key**

<b>Elements</b>			<b>History</b>		
1.	blue	(15, 16)	16.	c	(49)
2.	a	(32, 66)	17.	France	(55)
3.	d	(37, 57, 61)	18.	c	(38)
4.	<i>Apple Harvest</i>	(67)	19.	scientific	(22)
5.	c	(23)	20.	a	(48)
6.	d	(52)	21.	Chardin	(43, 50)
7.	oil / wood	(27, 67)	22.	b	(35)
8.	b	(33)	23.	d	(45)
9.	b	(44)	24.	b	(31)
10.	F	(50)	25.	T	(25)
11.	T	(28)	26.	T	(63)
12.	T	(13)	27.	F	(26)
13.	T	(46)	28.	F	(10, 40)
14.	F	(64)	29.	T	(24)
15.	F	(29)	30.	T	(60)

---

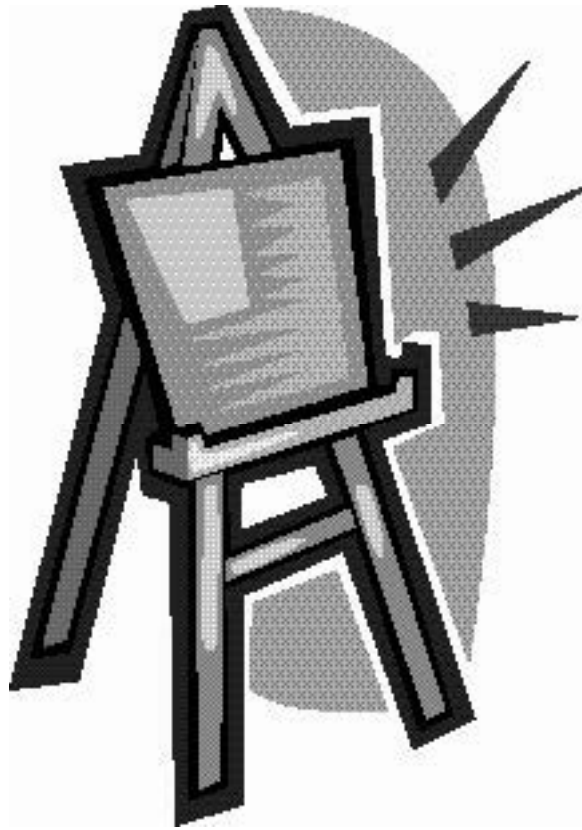
Numbers in parentheses are page numbers where answers can be found in the *Art Smart Bulletin* for 2017-2018 and 2018-2019. Correct spelling is not required for short answers.

**FALL/WINTER DISTRICT 2018-2019**

**A+ ACADEMICS**



University Interscholastic League



# Art Contest

grades 4, 5, & 6

**DO NOT OPEN TEST  
UNTIL TOLD TO DO SO**

**2018-2019 Fall-Winter District Art Test Part B - Grades 4-6**  
**Art Elements Section**

1. The way something feels when you touch it is called \_\_\_\_\_.
2. To show the woman's social position in *A Young Woman and Her Little Boy*, the artist used
  - a. the color of her dress.
  - b. a point of view suggesting viewers look up toward her.
  - c. details of rich clothing and jewels.
  - d. all of the above
3. Small, soft brushstrokes are used in *The Basket Chair* to paint the
  - a. face of the artist's daughter.
  - b. leaves of trees.
  - c. niece's dress.
  - d. basket chair.
4. In which of these paintings did the artist use a background that creates a shallow visual space and pushes the subject forward?
  - a. *Virgin and Child with the Infant Saint John the Baptist*
  - b. *The Annunciation*
  - c. *Saint John the Baptist Preaching in the Wilderness*
  - d. *Madonna and Child with Angels*
5. *Still Life with Fruit* was painted on \_\_\_\_\_.
6. Colors in the shadow beneath the tree in *Apple Harvest* are
  - a. cool.
  - b. muted.
  - c. warm.
  - d. complementary.
7. Activities shown in *Winter in Holland: Skating Scene* include all of the following except
  - a. a game like golf.
  - b. a girl riding a sled.
  - c. a card game.
  - d. ice skating.
8. \_\_\_\_\_ lines help create a feeling of movement in *River Landscape*.

9. The artist showed the knife handle reaching off the table in *Still Life with a White Mug* to
- provide a point of visual focus.
  - create a sense of depth.
  - suggest the knife might fall.
  - keep viewers' eyes moving around the image.

### True/False

10. The pose in *Le Roi à la Chasse [The King at the Hunt]* is based on a portrait of a king.
11. The artist used objects pictured in *A Fête Champêtre During the Grape Harvest* to create a visual frame for the most important part of his subject.
12. To make a bright, pure blue color look dull and gray, an artist would mix in a little red.
13. In both *Forest Scene* and *Bridal Veil Meadow, Yosemite*, human figures serve as symbols of mankind's unimportance compared to nature.
14. *The Fourteenth of July* provides an example of a genre scene.
15. The composition of *The Gypsy Princesses* is structured with the geometric shape created by the way the artist posed his figures.

### Art History Section

16. What art history period is best described as "a rebirth of classical learning?"
17. Which of the following was an American artist?
- Hamilton
  - Carlsen
  - Kane
  - all of the above
18. One Neoclassical artist who served as official painter to Napoleon was \_\_\_\_\_.
19. Georgia O'Keeffe was married to a
- painter.
  - photographer.
  - scientist.
  - sculptor.

20. David Teniers the Younger is best-known for painting
- abstract works.
  - genre scenes.
  - landscapes.
  - portraits.
21. René Magritte painted in a style known as
- Cubist.
  - Fauvist.
  - Pointillist.
  - Surrealist.
22. Louis Le Nain grew up in
- the city of Paris.
  - a monastery.
  - the countryside of northern France.
  - Rome, Italy.
23. Hans Hofmann is famous for
- combining day and night into the same painting.
  - using color to suggest movement and depth.
  - creating portraits that show his sitters' social importance.
  - using light and shadow to show texture and three-dimensional form.
24. His characteristic way of filling his paintings with figures and elaborate details once got \_\_\_\_\_ in trouble with a court of the Inquisition.

### **True/False**

25. Diego Rivera painted wall murals in public buildings in several U.S. cities.
26. The invention of airtight metal tubes for carrying paint made it practical for artists to complete works outdoors instead of in their studios.
27. Jan Brueghel the Elder was taught to paint by his father.
28. Shockingly bright colors used in unnatural ways are a characteristic of the Fauvist style.
29. Anton von Werner taught art in France at the Academy of Painting.
30. *Portrait of a Man with an Arrow* was painted after *The Prefect Raffaele Raggi* was.

**2018-2019 Fall/Winter District Art Test - Grades 4-6  
(Part B)**

**Answer Key**

<b>Elements</b>			<b>History</b>		
1.	texture	(12, 18)	16.	Renaissance	(21)
2.	d	(27)	17.	b	(57)
3.	a	(53)	18.	Gérard	(46)
4.	a	(34)	19.	b	(60)
5.	wood	(38, 67)	20.	b	(33)
6.	d	(54)	21.	d	(62)
7.	c	(36)	22.	c	(35)
8.	diagonal	(29)	23.	b	(63)
9.	b	(43)	24.	Veronese	(28)
10.	T	(66)	25.	T	(61)
11.	T	(39)	26.	T	(40)
12.	F	(16)	27.	F	(31)
13.	T	(37, 52)	28.	T	(9, 56)
14.	F	(59)	29.	F	(51)
15.	T	(49)	30.	F	(25, 32)

---

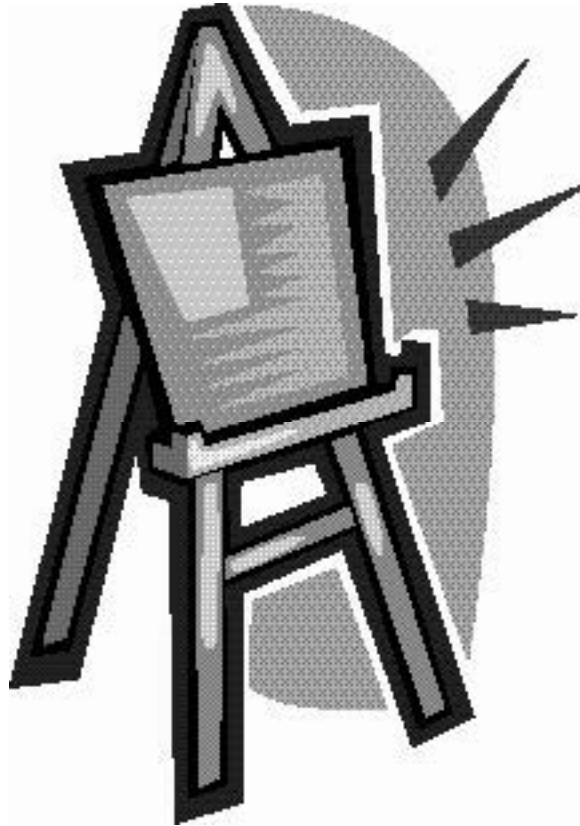
Numbers in parentheses are page numbers where answers can be found in the *Art Smart Bulletin* for 2017-2018 and 2018-2019. Correct spelling is not required for short answers.

**FALL/WINTER DISTRICT 2018-2019**

**A+ ACADEMICS**



University Interscholastic League



# Art Contest

grades 7 & 8

**DO NOT OPEN TEST  
UNTIL TOLD TO DO SO**



**2018-2019 Fall/Winter District Art Test Part B - Grades 7-8**  
**Art Elements Section**

1. *Landscape with Peasants* combines both \_\_\_\_\_ and \_\_\_\_\_ subjects.
2. The artist used color and brushwork in *Train Coming in - Canyon, Texas* to
  - a. capture the effects of light.
  - b. suggest a sense of movement.
  - c. create a calm, dignified mood.
  - d. none of the above
3. To make tempera paints, powdery colors are mixed with \_\_\_\_\_.
4. Warm red color is used in *Saint John the Baptist Preaching in the Wilderness* to
  - a. guide viewers' eyes around the image.
  - b. represent God's presence.
  - c. tie the foreground and background together.
  - d. separate the saint's figure from its setting.
5. The artist gave a dramatic mood to the image in
  - a. *The Kiss (Le Baiser)*.
  - b. *A Fête Champêtre During the Grape Harvest*.
  - c. *Forest Scene*.
  - d. *The Artist's Wife and Daughters in a Park at Heringsdorf*.
6. In *The Fourteenth of July*, the artist used shapes to
  - a. structure the composition.
  - b. lead viewers into the background.
  - c. show objects from multiple points of view at once.
  - d. provide a point of focus.
7. Which of these works uses a point of view most different from the one the artist chose for *Winter in Holland: Skating Scene*?
  - a. *The Finding of Moses*
  - b. *Apple Harvest*
  - c. *Bridal Veil Meadow, Yosemite*
  - d. *Anvers, L'entrée du Port (Entrance to Port of Anvers)*
8. The windows of buildings pictured in *The Grand Canal* offer an example of an artist's use of \_\_\_\_\_.

9. The artist included small creatures in *Flowers in a Basket and a Vase* to
- keep eyes moving through the image.
  - celebrate the richness of creation.
  - encourage viewers' imagination.
  - remind viewers that earthly life does not last.

**True/False**

10. *Frederick North, Later Fifth Earl of Guilford, in Rome* is larger than *The Prefect Raffaele Raggi*.
11. Contrasts of texture help add a visual interest to the image in *Still Life with Fruit*.
12. Curved lines create the same kind of feeling in *La Siesta* as they do in *Bouquet of Flowers in a Terracotta Vase with Peaches and Grapes*.
13. The artist carefully arranged the figures in *The Gypsy Princesses* to give his composition formal balance and a sense of stability.
14. Soft reflections of light help suggest the texture of fur in *Portrait of a Woman*.
15. The techniques known as atmospheric perspective add a sense of depth to *The Annunciation*.

**Art History Section**

16. New developments in art during the Twentieth Century period of art history include
- acrylic paints.
  - metal tubes for carrying paint.
  - watercolors.
  - all of the above
17. Van Dyck's father was a
- sculptor.
  - silk merchant.
  - still life painter.
  - stonecutter.
18. Which of these works was influenced by the Pointillist style?
- Midsummer Twilight*
  - Cabin Fever*
  - Jack*
  - The Kiss (Le Baiser)*

19. \_\_\_\_\_ was important in the development of Abstract Expressionism as both a painter and a teacher.
20. Which of the following is not characteristic of Chardin's approach to painting?
- choosing ordinary objects and everyday activities as subjects
  - showing more interest in color and form than in detail and texture
  - using thick paint and visible brushwork
  - creating compositions from preliminary drawings and sketches
21. The nationality of the artist who painted *Portrait of a Man with an Arrow* was \_\_\_\_\_.
22. The style of portraits \_\_\_\_\_ developed while working as official painter to the Duke of Florence influenced other painters long after his death.
23. Which of these pairs of paintings was created at closest to the same time?
- Madonna and Child with Angels* and *Virgin and Child with the Infant Saint John the Baptist*
  - The Basket Chair* and *The Three Umbrellas*
  - River Landscape* and *Rocky Headland with Wigwams in Foreground*
  - Still Life with a White Mug* and *Study in Grey*
24. Camille Pissarro was born in
- Denmark.
  - England.
  - France.
  - the Virgin Islands.

### True/False

25. In spite of his skill, David Teniers the Younger was not able to earn enough with his painting to provide for his family.
26. Baron François Gérard and Diego Rivera were both influenced by art they saw in Italy.
27. Before she began painting full time, Georgia O'Keeffe worked as a photographer.
28. Venetian artists during the Renaissance considered color and light more important than other elements in painting.
29. Works by both Carlsen and Wiley use approaches to composition learned from earlier painters.
30. Diaz de la Peña is best known for painting realistic landscapes.

**2018-2019 Fall/Winter District Art Test - Grades 7-8  
(Part B)**

**Answer Key**

<b>Elements</b>			<b>History</b>		
1.	landscape / genre	(35)	16.	a	(64)
2.	b	(60)	17.	b	(32)
3.	egg	(21)	18.	c	(65)
4.	d	(42)	19.	Hofmann	(63)
5.	c	(37)	20.	d	(43)
6.	c	(59)	21.	Netherlandish	(25)
7.	a	(28, 36)	22.	Bronzino	(27)
8.	rhythm	(11, 19, 47)	23.	b	(53, 58)
9.	b	(31)	24.	d	(54)
10.	F	(67)	25.	F	(33)
11.	T	(38)	26.	T	(46, 61)
12.	F	(44, 61)	27.	F	(60)
13.	F	(49)	28.	T	(26)
14.	T	(26)	29.	T	(57, 66)
15.	F	(22, 24)	30.	T	(49)

---

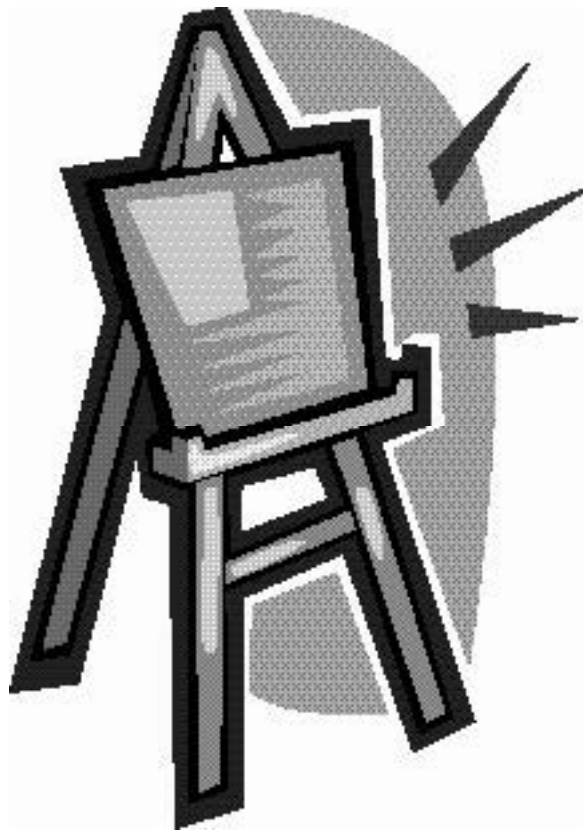
Numbers in parentheses are page numbers where answers can be found in the *Art Smart Bulletin* for 2017-2018 and 2018-2019. Correct spelling is not required for short answers.

**SPRING DISTRICT 2018-2019**

**A+ ACADEMICS**



University Interscholastic League



# Art Contest

grades 4, 5, & 6

**DO NOT OPEN TEST  
UNTIL TOLD TO DO SO**

**2018-2019 Spring District Art Test Part B - Grades 4-6**  
**Art Elements Section**

1. The mood of *River Landscape* is
  - a. dramatic.
  - b. gloomy.
  - c. peaceful.
  - d. playful.
  
2. Painting roads wide in the foreground and growing narrower in the background is a technique artists use to show \_\_\_\_\_.
  
3. In which of these works is a contrast between dark and light most important to the composition?
  - a. *Winter in Holland: Skating Scene*
  - b. *Le Roi à la Chasse [The King at the Hunt]*
  - c. *Virgin and Child with the Infant Saint John the Baptist*
  - d. *Apple Harvest*
  
4. The subject of \_\_\_\_\_ is a horse.
  
5. The three-quarter pose used in *Portrait of a Man with an Arrow*, lets artists show
  - a. details of their sitter's features.
  - b. expressions of emotion.
  - c. impressions of a sitter's personality.
  - d. all of the above
  
6. To keep eyes moving across *Flowers in a Basket and a Vase*, the artist used
  - a. color.
  - b. light.
  - c. lines.
  - d. shapes.
  
7. The visual point of focus for *The Three Umbrellas* is the \_\_\_\_\_ in its center.
  
8. The surface of *Frederick North, Later Fifth Earl of Guilford, in Rome* is
  - a. bumpy.
  - b. polished.
  - c. rough.
  - d. velvety.

9. The background of *Midsummer Twilight* includes
- a dark sky filled with stars.
  - the rising moon.
  - a distant city.
  - the setting sun.

### True/False

10. The artist paid careful attention to painting realistic details in *The Kiss (Le Baiser)*.
11. Artists often arrange objects in their compositions so viewers see lines or geometric shapes.
12. *Bouquet of Flowers in a Terracotta Vase with Peaches and Grapes* is a smaller painting than *Anvers, L'entrée du Port (Entrance to Port of Anvers)*.
13. Colors are used as symbols in *Madonna and Child with Angels*.
14. Drawn outlines of objects are visible in *The Grand Canal* because the work was painted with transparent watercolors.
15. The point of view the artist gave viewers for *A Young Woman and Her Little Boy* was intended to create a feeling of closeness and connection to the sitters.

### Art History Section

16. Characteristics that are common in paintings from the Baroque period include
- formal compositions.
  - use of diagonal lines.
  - strong contrasts between light and dark.
  - all of the above
17. Metcalf was a leading American artist working in the \_\_\_\_\_ style.
18. Before beginning to paint his country's lands and people, Kane worked as
- an illustrator.
  - a sign painter.
  - a teacher.
  - a designer of stage sets.
19. \_\_\_\_\_ taught that abstract paintings should create a visual sense of depth and movement.

20. Which of these women is best-known for painting scenes of family life?
- Morisot
  - O’Keefe
  - Rothenberg
  - Vallayer-Coster
21. Which of these characteristics is not common in works by van Dyck?
- repeated patterns of pose
  - several different points of view in one image
  - vague landscape backgrounds
  - vivid textures of cloth and metal
22. Which work was painted first, *Jack* or *Apple Harvest*?
23. Veronese’s father was a
- goldsmith.
  - sailor.
  - painter.
  - stonecutter.
24. Van Walscapelle lived and worked in the city of
- Amsterdam.
  - Berlin.
  - Paris.
  - Rome.

### **True/False**

25. *Soldiers Playing Dice* provides an example of the kind of subject that was popular for painters during the Renaissance.
26. The Rococo style of painting developed in France.
27. Thomas Hill’s nationality is considered American because of where he was born.
28. Wars and economic depression influenced the way artists painted during the Twentieth Century period of art history.
29. *Portrait of a Woman* emphasizes art elements that painters working in Florence at the time considered most important.
30. Chardin earned acceptance into the French Academy of Painting with the kinds of paintings known as “fête galante.”



**2018-2019 Spring District Art Test - Grades 4-6  
(Part B)**

**Answer Key**

<b>Elements</b>			<b>History</b>		
1.	c	(29)	16.	d	(30)
2.	perspective	(10, 18)	17.	Impressionist	(55)
3.	c	(34)	18.	b	(48)
4.	<i>Cabin Fever</i>	(64)	19.	Hofmann	(63)
5.	d	(25)	20.	a	(53)
6.	a	(31)	21.	b	(32)
7.	(red) umbrella	(58)	22.	<i>Apple Harvest</i>	(54, 65)
8.	d	(45)	23.	d	(28)
9.	b	(55)	24.	a	(38)
10.	T	(62)	25.	F	(21, 33)
11.	T	(19)	26.	T	(11, 30)
12.	F	(44, 50, 67)	27.	F	(52)
13.	T	(23)	28.	T	(56)
14.	F	(47)	29.	F	(26)
15.	F	(27)	30.	F	(43)

---

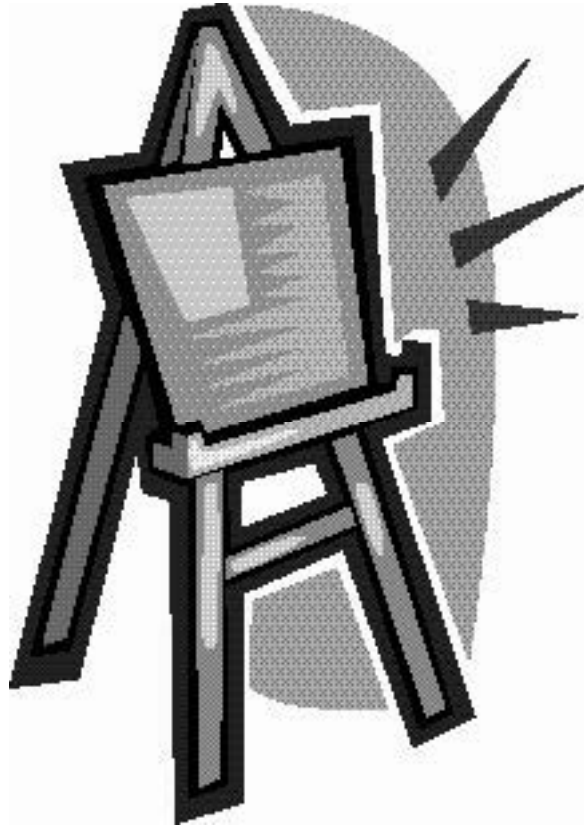
Numbers in parentheses are page numbers where answers can be found in the *Art Smart Bulletin* for 2017-2018 and 2018-2019. Correct spelling is not required for short answers.

**SPRING DISTRICT 2018-2019**

**A+ ACADEMICS**



University Interscholastic League



# Art Contest

grades 7 & 8

**DO NOT OPEN TEST  
UNTIL TOLD TO DO SO**

**2018-2019 Spring District Art Test Part B - Grades 7-8**  
**Art Elements Section**

1. In *The Annunciation*, the Madonna's purity is symbolized by the color of her robe and by the \_\_\_\_\_.
2. Which of these techniques of perspective is least important in *The Gypsy Princesses*?
  - a. using warm color in the foreground but not in the background.
  - b. picturing more distant objects smaller than closer ones.
  - c. showing only foreground objects in sharp detail.
  - d. having colors fade from foreground to background.
3. The objects pictured on the left side of *Soldiers Playing Dice* offer contrasts of
  - a. color.
  - b. line.
  - c. texture.
  - d. all of the above
4. The artist used \_\_\_\_\_ as an art element to increase the emotional impact of *To Miz-Pax Vobiscum*.
5. Which of these works would you expect to have the roughest surface?
  - a. *The Artist's Wife and Daughters in a Park at Heringsdorf*
  - b. *Rocky Headland with Wigwams in Foreground*
  - c. *Portrait of the Duchess de Montebello with her Children*
  - d. *Bouquet of Flowers in a Terracotta Vase with Peaches and Grapes*
6. Something that absorbs all the light that hits it looks \_\_\_\_\_.
7. In *Midsummer Twilight*, the artist used rhythms of color, line, and shape to
  - a. create a feeling of strength and stability.
  - b. provide a central point of focus.
  - c. guide viewers through the image.
  - d. give the composition formal structure and balance.
8. *Frederick North, Later Fifth Earl of Guilford, in Rome* and *Le Roi à la Chasse [The King at the Hunt]* are most alike in their
  - a. attention to detail.
  - b. backgrounds.
  - c. colors.
  - d. types of paints.

9. The artist used diagonal lines to suggest a feeling of movement in
- Train Coming in - Canyon, Texas.*
  - Landscape with Peasants.*
  - River Landscape.*
  - Cabin Fever.*

### True/False

10. *Portrait of a Man with an Arrow* and *Portrait of a Woman* were created on the same kind of surface with the same type of paints.
11. The way the dog's shadow is pictured in *Jack* suggests a time of day.
12. Showing the figures in *Virgin and Child with the Infant Saint John the Baptist* at the front of the picture plane helps make them seem real.
13. Bright light provides the central point of focus around which the composition of *Still Life with a White Mug* is structured.
14. *A Young Woman and Her Little Boy* was not originally a group portrait.
15. Basing a painting's composition on a triangle or pyramid shape gives the work formal balance.

### Art History Section

16. Which is the earlier painting, *The Kiss (Le Baiser)* or *The Three Umbrellas*?
17. Which of the following influenced painters during the Modern period of art history?
- growth of the Protestant faith in the Netherlands
  - technological developments like television
  - discoveries in the ancient city of Pompeii
  - scientific discoveries of Galileo and Newton
18. One characteristic often seen in works by Veronese is
- unmixed colors placed side-by-side.
  - strong contrasts between dark and light areas of his image.
  - compositions based on earlier paintings.
  - elaborate decorative details.
19. \_\_\_\_\_ was one of the first French artists to paint outdoors.

20. Which of these artists is best known for creating history paintings?
- Vallayer-Coster
  - von Werner
  - van Dyck
  - van der Neer
21. \_\_\_\_\_ earned his living both as a painter and as a city official.
22. Giovanni entered into partnership with another artist in order to
- improve his financial situation.
  - have someone to help create his paintings.
  - open a painting school.
  - learn a new approach to painting.
23. Most of Bonington's short painting career was spent in
- England.
  - France.
  - Germany.
  - Italy.
24. The group of artists who first developed the Impressionist style were influenced by
- Boudin.
  - Diaz de la Peña.
  - Pissarro.
  - all of the above

### **True/False**

25. Metcalf is famous for painting in the Pointillist style he learned while in Europe.
26. Carlsen's nickname comes from the name of the earlier artist he most admired.
27. Jan Brueghel the Elder first studied painting with his father.
28. Anton Raphael Mengs is most admired for the portraits he painted.
29. Paul Kane and Diego Rivera were both of North American nationalities.
30. Artists painting in the Impressionist style usually worked in studios, using drawings or sketches they made outdoors.

**2018-2019 Spring District Art Test - Grades 7-8  
(Part B)**

**Answer Key**

<b>Elements</b>		<b>History</b>
1.	lily (24)	16. <i>The Three Umbrellas</i> (58, 62)
2.	c (49)	17. c (40)
3.	d (33)	18. d (28)
4.	size (63)	19. Boudin (50)
5.	b (48)	20. b (51)
6.	black (15)	21. van Walscapelle (38)
7.	c (55)	22. a (23)
8.	a (45, 66)	23. b (47)
9.	c (29)	24. d (49, 50, 54)
10.	F (25, 26, 67)	25. F (55)
11.	T (65)	26. T (57)
12.	T (34)	27. F (31)
13.	F (43)	28. T (42)
14.	T (27)	29. T (48, 61)
15.	T (19)	30. F (41)

---

Numbers in parentheses are page numbers where answers can be found in the *Art Smart Bulletin* for 2017-2018 and 2018-2019. Correct spelling is not required for short answers.