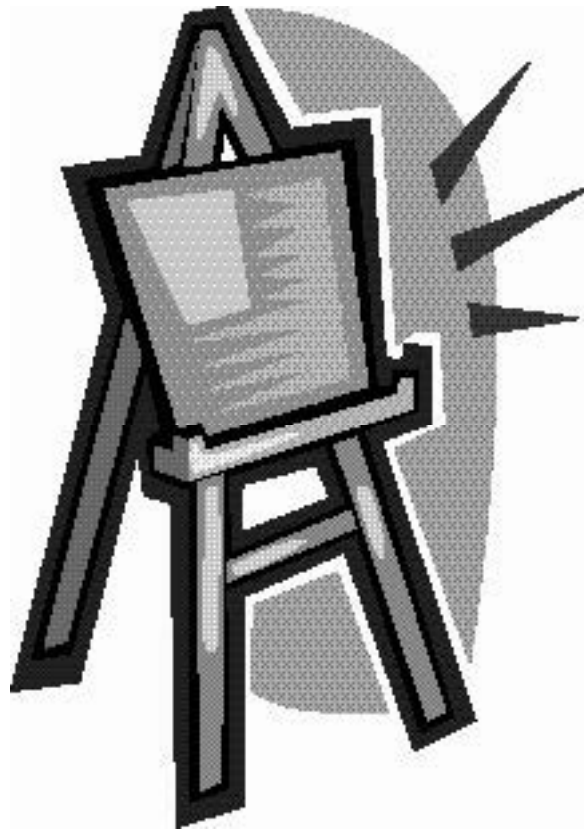


**INVITATIONAL 2021-2022**

**A+ ACADEMICS**



University Interscholastic League



# Art Contest

grades 4, 5, & 6

**DO NOT OPEN TEST  
UNTIL TOLD TO DO SO**

**2021-2022 Invitational Art Test Part B - Grades 4-6**  
**Art Elements Section**

1. Which of these pictures is painted on a very small wood panel?
  - a. *River Landscape*
  - b. *Pink Cyclamen*
  - c. *Saint George and the Dragon*
  - d. *Three Maries at the Tomb*
  
2. A painting with streets and buildings as its main subject is called a \_\_\_\_\_.
  
3. In which of these paintings are complementary colors most important in the composition of the painting?
  - a. *Portrait of Michol (Miguel Pol?)*
  - b. *Old Faithful Geyser, Yellowstone National Park*
  - c. *New York at Night*
  - d. *Oarsmen at Chatou*
  
4. The mood of *Three Maries at the Tomb* is one of
  - a. peacefulness and calm.
  - b. drama and surprise.
  - c. play and relaxation.
  - d. busy activity.
  
5. The composition of *Still Life with Vegetables* is structured around what geometric shape?
  
6. The artist added liveliness to *Old Faithful Geyser, Yellowstone National Park* by
  - a. using curved lines in the spray and clouds.
  - b. showing people in the foreground.
  - c. using complementary colors.
  - d. leaving small areas of the canvas unpainted.
  
7. What color in *Mounted Trumpeters of Napoleon's Imperial Guard* keeps our eyes moving through the image?
  - a. gray
  - b. red
  - c. white
  - d. black

8. Painting roads wide in the foreground and growing narrower in the background is a technique artists use to show \_\_\_\_\_.
9. We see different points of view in the same painting in
- Mountains at Collioure*
  - A Pastoral Concert*
  - Pink Cyclamen*
  - Still Life with Milk Jug and Fruit*

### True/False

10. In *Queen Henrietta Maria with Sir Jeffrey Hudson*, the poses of the queen and Sir Jeffrey help create a casual image, as if they are about to step out of the picture.
11. Something in a painting that repeats and creates a kind of pattern is called rhythm.
12. The mood of *The Harvesters* is calm and peaceful.
13. The main focus of attention in *Portrait of an Old Woman* is the dark background.
14. The plates and glass in *A Roemer with Grapes, a Pewter Plate, and a Roll* are created with broad, loose brushstrokes.
15. The artist added liveliness to *Pink Cyclamen* by using complementary colors.

### Art History Section

16. A Renaissance invention that helped more people become better educated was the
- printing press.
  - steam engine.
  - television.
  - calculator.
17. Where was Weber born?
- Germany
  - Italy
  - Russia
  - America
18. A graceful and decorative painting style that developed during the Baroque period is called \_\_\_\_\_.

19. Before he became a painter, Durand worked as
- an engraver.
  - a lawyer.
  - an architect.
  - a musician.
20. De Vlieger
- is best known for the bright, warm colors he uses in his landscapes.
  - spent many years painting portraits in England.
  - painted during the Baroque period of art history.
  - made his living as an engraver while he studied to become an artist.
21. In what country did the Impressionist style of painting first develop?
22. Which of these artists was one of the most important American Impressionists?
- Hassam
  - Peale
  - Couse
  - Monet
23. *River Landscape*
- was painted by a French artist.
  - is an imaginary scene set in the Flemish countryside.
  - was painted during the Modern period of art history.
  - is painted in the Romantic style.
24. Abstract painting first developed in the \_\_\_\_\_ period.

### **True/False**

25. Neoclassical painters often based their figures on ancient Greek or Roman statues.
26. *The Small Cowper Madonna* is Raphael's only Madonna painting that still exists today.
27. Sir Joshua Reynolds was made a knight by King George III of England.
28. *The Harvesters* is painted in the Pointillist style.
29. Derain painted in the same style throughout his career as an artist.
30. The Netherlands was one of the most important centers of art during the Baroque period.

**2021-2022 Invitational Art Test - Grades 4-6  
(Part B)**

**Answer Key**

<b>Elements</b>			<b>History</b>		
1.	c	(23, 56)	16.	a	(20)
2.	cityscape	(8)	17.	c	(52)
3.	d	(45)	18.	Rococo	(12, 28)
4.	b	(27)	19.	a	(42)
5.	triangle	(41)	20.	c	(31)
6.	a	(46)	21.	France	(10)
7.	b	(40)	22.	a	(48)
8.	perspective	(11, 18)	23.	b	(29)
9.	d	(50)	24.	Contemporary	(8, 49)
10.	T	(30)	25.	T	(10, 36)
11.	T	(11, 19)	26.	F	(25)
12.	T	(47)	27.	T	(39)
13.	F	(24)	28.	T	(47)
14.	F	(32)	29.	F	(51)
15.	T	(43)	30.	T	(28)

---

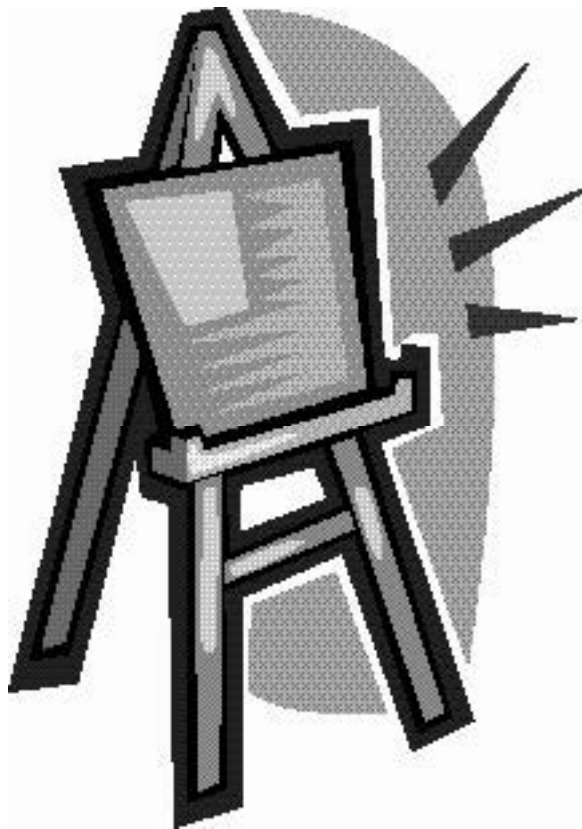
Numbers in parentheses are page numbers where answers can be found in the *Art Smart Bulletin* for 2021-2022 and 2022-2023. Correct spelling is not required for short answers.

**INVITATIONAL 2021-2022**

**A+ ACADEMICS**



University Interscholastic League



# Art Contest

grades 7 & 8

**DO NOT OPEN TEST  
UNTIL TOLD TO DO SO**

**2021-2022 Invitational Art Test Part B - Grades 7-8**  
**Art Elements Section**

1. An advantage that oil paints have over tempera is that oils
  - a. dry more slowly.
  - b. can be used in thin glazes or as thick paints.
  - c. have richer colors in dark shades.
  - d. all of the above
  
2. Which of these paintings provides the best example of contrasts of light, color, and texture?
  - a. *Still Life with Vegetables*
  - b. *Rainy Midnight*
  - c. *Pink Cyclamen*
  - d. *The Madonna of Humility*
  
3. In which of these paintings does the artist use several different kinds of brushstrokes?
  - a. *Dalet Kaf*
  - b. *Oarsmen at Chatou*
  - c. *Still Life with Vegetables*
  - d. *The Harvesters*
  
4. Which painting would you expect to have a rougher surface, *Ariadne Abandoned by Theseus* or *Rainy Midnight*?
  
5. The foreground of *Haystack Mountain, Vermont* includes all of the following except
  - a. a dead tree.
  - b. a man and dog.
  - c. a plume of smoke.
  - d. slabs of rock.
  
6. Which of the following is an example of a group portrait?
  - a. *Queen Henrietta Maria with Sir Jeffrey Hudson*
  - b. *Portrait of an Old Woman*
  - c. *The Quiver Maker*
  - d. *The Harvesters*
  
7. In *Pink Cyclamen*, the artist used shades of \_\_\_\_\_ red and green colors to add liveliness to the image of a potted plant.

8. The artist used contrasts in *Portrait of Michol (Miguel Pol?)* to
- create a harsh, dramatic mood.
  - add variety and interest to the image.
  - separate the sitter's figure from the background.
  - all of the above
9. In *Anton Francesco degli Albizzi*, the vertical lines formed by the fur trim on the subject's robe suggest an idea of \_\_\_\_\_.

### True/False

10. The techniques of using narrowing lines and proportionally smaller objects to show distance are known as atmospheric perspective.
11. Blue is used in *The Madonna of Humility* to help tie different parts of the painting together.
12. Diagonal lines through the center of *New York at Night* suggest motion on city streets.
13. Texture is the most important element in the composition of *Dalet Kaf*.
14. Pure colors were painted onto a smooth, white undercoating to make them appear brighter and more intense in *Woman with a Parasol - Madame Monet and Her Son*.
15. The artist used the same kind of brushstrokes throughout the painting of *Mounted Trumpeters of Napoleon's Imperial Guard*.

### Art History Section

16. Angelica Kauffmann learned to paint human figures by
- training with her brother-in-law.
  - studying models in art class.
  - trial and error.
  - copying classical statues.
17. The artist Jacopo Chimenti is called Empoli from the name of the city where he
- was born.
  - was named official painter.
  - worked most of his career.
  - established an art academy.
18. \_\_\_\_\_ was a founding member of the Taos Society of Artists and its first president.



19. Takayama was honored for his painting skill by
- the Japanese government.
  - King Louis XIV of France.
  - the Catholic Pope.
  - the king of Spain.
20. Strong contrasts between light and dark areas are common in works from which art period?
21. Which of these paintings was created during the Modern period of art history?
- Estuary at Day's End*
  - New York at Night*
  - Old Faithful Geyser, Yellowstone National Park*
  - Still Life with Milk Jug and Fruit*
22. Which of these artists did not die before his 50th birthday?
- Raphael
  - Monet
  - Gericault
  - Louis
23. Sebastiano was born and first studied painting in the city of \_\_\_\_\_ Italy.
24. Most of the work from the earliest part of Peale's art career was
- large portraits.
  - still lifes.
  - miniature portraits.
  - history paintings.

### **True/False**

25. Shockingly bright colors and twisted forms are typical of the Fauvist style.
26. Hans Memling trained in van der Weyden's workshop.
27. *A Dutch Courtyard* is painted in the Romantic style.
28. Grafton Tyler Brown worked at his family's bank before pursuing a career in art.
29. Frederick the Great of Germany owned several of Pater's paintings.
30. *Three Marias at the Tomb* was painted after *River Landscape*.

**2021-2022 Invitational Art Test - Grades 7-8  
(Part B)**

**Answer Key**

<b>Elements</b>			<b>History</b>		
1.	d	(20, 21)	16.	d	(38)
2.	a	(41)	17.	a	(27)
3.	b	(45)	18.	Couse	(53)
4.	<i>Rainy Midnight</i>	(38, 48)	19.	a	(55)
5.	c	(42)	20.	Baroque	(8, 28)
6.	a	(30)	21.	c	(46)
7.	complementary	(43)	22.	b	(44)
8.	b	(34)	23.	Venice	(26)
9.	strength [or] power	(26)	24.	c	(41)
10.	F	(21)	25.	T	(9)
11.	T	(22)	26.	T	(24)
12.	T	(52)	27.	F	(33)
13.	F	(54)	28.	F	(46)
14.	T	(44)	29.	T	(35)
15.	F	(40)	30.	F	(27, 29)

---

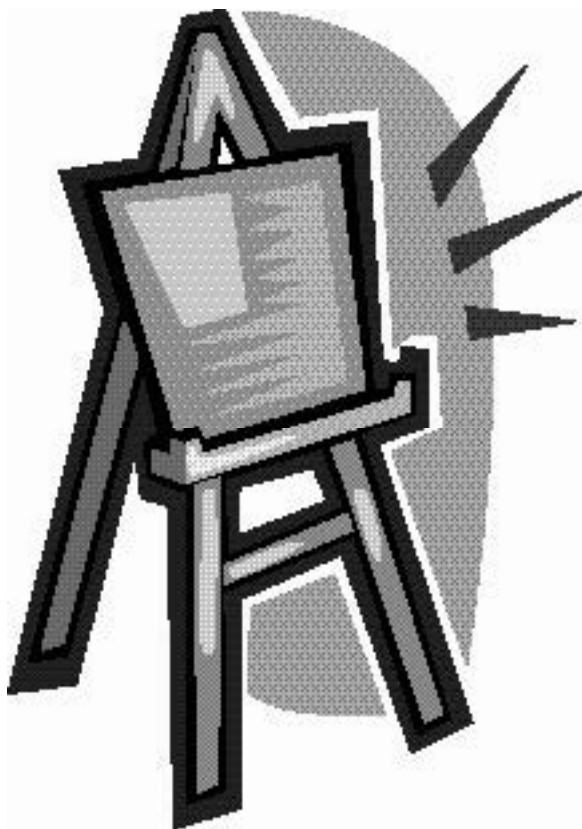
Numbers in parentheses are page numbers where answers can be found in the *Art Smart Bulletin* for 2021-2022 and 2022-2023. Correct spelling is not required for short answers.

**FALL/WINTER DISTRICT 2021-2022**

**A+ ACADEMICS**



University Interscholastic League



# Art Contest

grades 4, 5, & 6

**DO NOT OPEN TEST  
UNTIL TOLD TO DO SO**

**2021-2022 Fall/Winter District Art Test Part B - Grades 4-6**  
**Art Elements Section**

1. To create a playful mood in *A Pastoral Concert*, the artist used all of the following except
  - a. curving lines.
  - b. feathery brushstrokes.
  - c. light, delicate colors.
  - d. dramatic contrast of light and shadow.
  
2. The colors red and green are
  - a. complementary.
  - b. primary.
  - c. cool.
  - d. warm.
  
3. The \_\_\_\_\_ in *Haystack Mountain, Vermont* serves as a symbol of permanence or eternity.
  
4. The artist created an image that suggests depth in *Expectation* by using
  - a. natural light and shadows.
  - b. warm color in the foreground and cool in the background.
  - c. colored shapes which seem layered over one another.
  - d. a distant landscape background.
  
5. An artist might use \_\_\_\_\_ lines in a painting to create a calm mood.
  
6. One technique the artist used to focus attention on the subjects of *Portrait of Mrs. Jelf Powis and Her Daughter* is
  - a. showing their dark clothing against a light wall.
  - b. contrasting the rich fabrics of their clothes against a hard wall.
  - c. painting their figures with looser brushstrokes than he used in the background.
  - d. showing them gazing directly at the viewer.
  
7. The rhythm in the composition of *Oarsmen at Chatou* is a rhythm of
  - a. horizontal and vertical lines.
  - b. circles.
  - c. color.
  - d. light and shadows.
  
8. *Dalet Kaf* fits into the subject group of paintings known as \_\_\_\_\_.

9. An example in *The Madonna of Humility* of a technique for showing perspective is
- the gold background.
  - painting the child smaller than the Madonna.
  - using the same color for the Madonna's robe and the angels' clothing.
  - making the squares in the fabric grow smaller as they move into the background.

### True/False

10. The part of a painting that seems closest to the viewer is called the foreground.
11. The vegetables in *Still Life with Vegetables* were chosen for their symbolic meanings.
12. Perspective is more important in the composition of *Haystack Mountain, Vermont* than it is in *Mountains at Collioure*.
13. Composition is the way an artist puts the elements of art together to create a painting.
14. Cool colors in *Mounted Trumpeters of Napoleon's Imperial Guard* draw our attention to the riders and their uniforms.
15. *Portrait of an Old Woman* was painted on a sheet of copper.

### Art History Section

16. Which of the following works was painted by a female artist?
- Three Maries at the Tomb*
  - Ariadne Abandoned by Theseus*
  - Haystack Mountain, Vermont*
  - The Madonna of Humility*
17. Solid forms and tiny details are often characteristic of paintings from the \_\_\_\_\_ period.
18. Which of these pictures was painted first?
- Saint George and the Dragon*
  - River Landscape*
  - The Small Cowper Madonna*
  - Anton Francesco degli Albizzi*
19. \_\_\_\_\_ was the first African-American professional artist to work on the west coast of the United States.

20. Van Beyeren's first paintings were of
  - a. elaborate banquet tables.
  - b. river scenery.
  - c. fantasy views.
  - d. fish.
  
21. During the Renaissance, artists developed
  - a. the Rococo style of painting.
  - b. techniques for showing perspective or distance in paintings.
  - c. abstract art.
  - d. still lifes as popular subjects for paintings.
  
22. What was the nationality of Claude Monet?
  
23. Which of these styles of painting did not develop during the Modern period?
  - a. Fauvism
  - b. Impressionism
  - c. Neoclassicism
  - d. Romanticism
  
24. Raphael
  - a. never traveled outside of his native France.
  - b. painted more than 300 Madonna paintings during his career as an artist.
  - c. is considered one of the greatest artists of the Baroque period of art history.
  - d. was almost 80 years old when he painted frescoes at the Vatican in Rome.

### **True/False**

25. Genre scenes first became popular subjects for paintings during the Baroque period.
  
26. *River Landscape* was painted before *Ariadne Abandoned by Theseus* was.
  
27. Carreño was best known for his elegant and accurate portraits of the British royal family.
  
28. The invention of airtight metal tubes for carrying paint made it practical for artists to complete works outdoors instead of in their studios.
  
29. Sebastiano worked constantly due to a fear of poverty and many of his works survive today.
  
30. *Pink Cyclamen* was painted in the Impressionist style.

**2021-2022 Fall/Winter District Art Test - Grades 4-6  
(Part B)**

**Answer Key**

<b>Elements</b>			<b>History</b>		
1.	d	(35)	16.	b	(38)
2.	a	(8)	17.	Baroque	(28)
3.	mountain	(42)	18.	a	(23)
4.	c	(55)	19.	Brown	(46)
5.	horizontal	(17)	20.	d	(32)
6.	b	(39)	21.	b	(21)
7.	c	(45)	22.	French	(44)
8.	abstract	(54)	23.	a	(49)
9.	d	(22)	24.	b	(25)
10.	T	(9)	25.	T	(28)
11.	F	(41)	26.	T	(29, 38)
12.	T	(42, 51)	27.	F	(34)
13.	T	(8)	28.	T	(36)
14.	F	(40)	29.	F	(26)
15.	F	(24)	30.	F	(43)

---

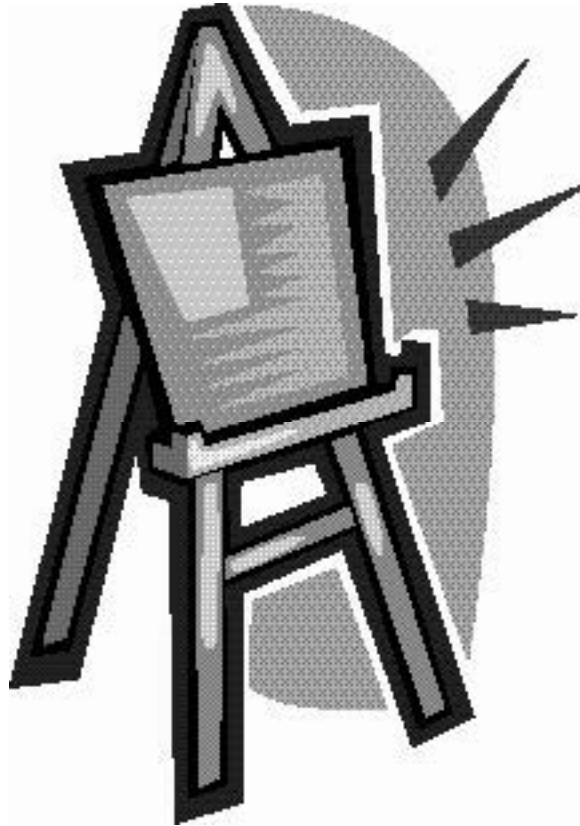
Numbers in parentheses are page numbers where answers can be found in the *Art Smart Bulletin* for 2021-2022 and 2022-2023. Correct spelling is not required for short answers.

**FALL/WINTER DISTRICT 2021-2022**

**A+ ACADEMICS**



University Interscholastic League



# Art Contest

grades 7 & 8

**DO NOT OPEN TEST  
UNTIL TOLD TO DO SO**



**2021-2022 Fall/Winter District Art Test Part B - Grades 7-8**  
**Art Elements Section**

1. To draw viewer's attention quickly to the angel in *Three Maries at the Tomb*, the artist used
  - a. warm color.
  - b. the poses of the women.
  - c. the light, bright color of the robe and wings.
  - d. a contrast of textures.
  
2. Making roads or rivers grow narrower in the background to suggest distance is a technique of the kind of perspective called \_\_\_\_\_.
  
3. The artist used bright, warm color in *Pink Cyclamen* to
  - a. tie the foreground and background together.
  - b. create a sense of depth.
  - c. suggest sunshine.
  - d. focus attention on the subject.
  
4. The color blue is used as a symbol of purity in
  - a. *Ariadne Abandoned by Theseus*.
  - b. *The Madonna of Humility*.
  - c. *Woman with a Parasol - Madame Monet and Her Son*.
  - d. *Three Maries at the Tomb*.
  
5. The geometric composition used in *Still Life with Vegetables* is most similar to
  - a. *Expectation*.
  - b. *Still Life with Milk Jug and Fruit*.
  - c. *A Roemer with Grapes, a Pewter Plate, and a Roll*.
  - d. *Pink Cyclamen*.
  
6. The original of *Anton Francesco degli Albizzi* is \_\_\_\_\_ in size than the original of *Portrait of an Old Woman*.
  
7. Which of these characteristics is most likely to be seen in an Impressionist painting?
  - a. roughly textured canvas
  - b. sharp contrast of light and shadow
  - c. strongly drawn lines
  - d. dark colors
  
8. Strong \_\_\_\_\_ lines can give a painting a sense of strength and order.

9. In *New York at Night*, the darkest shapes are images of night and the lightest shapes represent
- car lights passing on the streets.
  - buildings lit by street lights.
  - houses with Christmas lights.
  - neon signs.

### True/False

10. In *Saint George and the Dragon*, Saint George's white armor provides a contrast to the dark color of his horse.
11. Color is more important to the composition of *Dalet Kaf* than texture is.
12. The strong form of the geyser in *Old Faithful Geyser, Yellowstone National Park* creates a landscape image with a shallow visual space.
13. The term semi-abstract may describe paintings that picture real-world objects in distorted ways.
14. The church tower in *A Dutch Courtyard* is the tallest object in the painting.
15. Cézanne uses traditional techniques of light and shadow to show three-dimensional form in *Still Life with Milk Jug and Fruit*.

### Art History Section

16. In what country did the characteristics of Renaissance painting first develop?
17. Raphael
- is considered one of the greatest artists of the Baroque period of art history.
  - painted large ceiling and wall decorations as well as smaller works of art.
  - had a long and prolific career, painting even at a very old age.
  - traveled widely, painting for most of the royal courts of Europe.
18. Reynolds was honored for his painting skill by
- England's King George III.
  - King Louis XIV of France.
  - the Catholic Pope.
  - the king of Spain.
19. *The Harvesters* was painted in the style known as \_\_\_\_\_.

20. Which of these paintings is a Baroque painting?
- a. *Three Maries at the Tomb*
  - b. *Estuary at Day's End*
  - c. *Ariadne Abandoned by Theseus*
  - d. *Mounted Trumpeters of Napoleon's Imperial Guard*
21. Before he became a painter, Durand earned income by
- a. designing money.
  - b. serving in the military.
  - c. working in his family's bank.
  - d. working as a sculptor.
22. Which of these still lifes was created by an American artist?
- a. *Still Life with Milk Jug and Fruit*
  - b. *A Roemer with Grapes, a Pewter Plate, and a Roll*
  - c. *Still Life with Vegetables*
  - d. none of the above
23. Bright, unnatural colors and twisted shapes are characteristic of the \_\_\_\_\_ style of painting.
24. Gericault painted in a style called
- a. Impressionist.
  - b. Rococo.
  - c. Neoclassical.
  - d. Romantic.

### True/False

25. Baroque paintings often show tiny details of costumes and scenery and have strong contrasts between light and dark.
26. Sebastiano was appointed official painter for the king and queen of Spain.
27. Renoir is one of the artists who helped develop the Romantic style.
28. *Old Faithful Geyser, Yellowstone National Park* was painted before *Mountains at Collioure*.
29. Abstract art developed partly in response to rapid changes in science and technology.
30. The typical colors of the Rococo style are dark and dull.

**2021-2022 Fall/Winter District Art Test - Grades 7-8  
(Part B)**

**Answer Key**

<b>Elements</b>			<b>History</b>		
1.	c	(27)	16.	Italy	(20)
2.	scientific [or] linear	(21)	17.	b	(25)
3.	d	(43)	18.	a	(39)
4.	b	(22)	19.	Pointillism [or] Neo-Impressionism	(47)
5.	c	(32, 41)	20.	b	(31)
6.	larger	(24, 26)	21.	a	(42)
7.	a	(10)	22.	c	(41)
8.	vertical	(17)	23.	Fauvist	(9)
9.	b	(52)	24.	d	(40)
10.	F	(23)	25.	T	(28)
11.	T	(54)	26.	F	(26)
12.	F	(46)	27.	F	(45)
13.	T	(8)	28.	T	(46, 51)
14.	F	(33)	29.	T	(49)
15.	F	(50)	30.	F	(35)

---

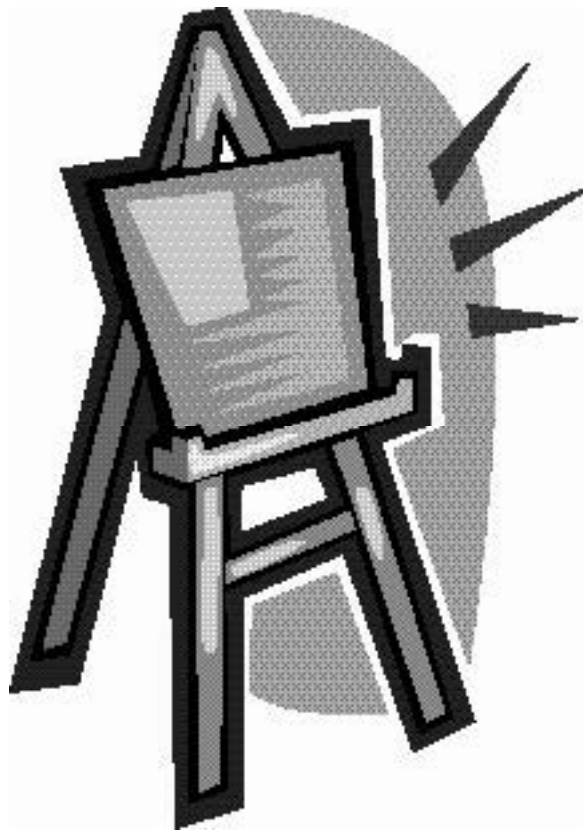
Numbers in parentheses are page numbers where answers can be found in the *Art Smart Bulletin* for 2021-2022 and 2022-2023. Correct spelling is not required for short answers.

**SPRING DISTRICT 2021-2022**

**A+ ACADEMICS**



University Interscholastic League



# Art Contest

grades 4, 5, & 6

**DO NOT OPEN TEST  
UNTIL TOLD TO DO SO**

**2021-2022 Spring District Art Test Part B - Grades 4-6**  
**Art Elements Section**

1. To make objects in a painting seem closer to the viewer, an artist would use
  - a. cool colors.
  - b. complementary colors.
  - c. warm colors.
  - d. neutral colors.
  
2. Which of these vegetables is not included in *Still Life with Vegetables*?
  - a. turnip
  - b. eggplant
  - c. tomato
  - d. cucumber
  
3. *Three Maries at the Tomb* would fit best into the \_\_\_\_\_ subject category.
  
4. In *Mounted Trumpeters of Napoleon's Imperial Guard*, the artist used short, rapid brushstrokes to paint the
  - a. horse and rider at the right of the picture.
  - b. horse and rider in the center of the picture.
  - c. background.
  - d. all of the above
  
5. Curved lines are least important in the composition of
  - a. *A Pastoral Concert*.
  - b. *Expectation*.
  - c. *The Harvesters*.
  - d. *Old Faithful Geyser, Yellowstone National Park*.
  
6. The part of a painting that seems farthest away from the viewer is called the \_\_\_\_\_.
  
7. What was not originally in the painting *Portrait of an Old Woman*?
  - a. the woman
  - b. the veil
  - c. the smile on the woman's face
  - d. the dark background
  
8. *New York at Night* is painted in an abstract style known as \_\_\_\_\_.

9. The artist added liveliness to *Pink Cyclamen* by using
- thick, textured paint.
  - complementary colors.
  - diagonal lines.
  - small living creatures in the image.

### True/False

10. To give a painting a peaceful feeling, an artist would probably use horizontal lines.
11. In *Woman with a Parasol - Madame Monet and Her Son*, the artist uses a white undercoating of paint to make colors brighter and more intense.
12. The surface of *Rainy Midnight* has a smooth and polished texture.
13. In *Old Faithful Geyser, Yellowstone National Park*, the artist used the vertical form of the geyser mainly to add liveliness to the scene.
14. In *Estuary at Day's End*, sunlight shines into the painting from the background of the picture.
15. Using complementary colors together in a painting is an example of creating contrast.

### Art History Section

16. Which of the following artists became a monk?
- Hans Memling
  - Jacopo Empoli
  - Fra Angelico
  - Jan Brueghel the Elder
17. What art history period is best described as “a rebirth of classical learning?”
18. An artist who is associated with the Taos Society of Artists in Taos, New Mexico, is
- Couse.
  - Brown.
  - Cézanne.
  - Derain.
19. What style of painting developed in France late in the Baroque period of art history?

20. What style of painting did Gericault use?
- Impressionist
  - Romantic
  - Fauvist
  - Rococo
21. Which of these works was created during the Modern period of art history?
- Anton Francesco degli Albizzi*
  - New York at Night*
  - Still Life with Milk Jug and Fruit*
  - none of the above
22. The nationality of artist Michio Takayama is \_\_\_\_\_.
23. *The Harvesters* is painted in the style known as
- Cubist.
  - Pointillist.
  - Fauvist.
  - Romantic.
24. Sebastiano worked as a famous portrait painter in the city of
- Rome, Italy.
  - Paris, France.
  - Houston, Texas.
  - London, England.

### True/False

25. Dutch artists first began to paint new subjects for an open market during the Baroque period of art history.
26. Asher Durand painted during the Renaissance period of art history.
27. Sir Joshua Reynolds was a founding member and the first president of the British Royal Academy.
28. *Saint George and the Dragon* is a story of an event from England's history.
29. *Rainy Midnight* is painted in the Fauvist style.
30. Sir Anthony van Dyck worked as court painter to England's King Charles I.



**2021-2022 Spring District Art Test - Grades 4-6  
(Part B)**

**Answer Key**

<b>Elements</b>			<b>History</b>		
1.	c	(11, 16)	16.	c	(22)
2.	d	(41)	17.	Renaissance	(20)
3.	history & legend	(9, 13)	18.	a	(53)
4.	b	(40)	19.	Rococo	(12, 28)
5.	b	(55)	20.	b	(40)
6.	background	(8)	21.	d	(2, 3)
7.	b	(24)	22.	American	(55)
8.	Cubism	(9, 52)	23.	b	(47)
9.	b	(43)	24.	a	(26)
10.	T	(17)	25.	T	(28)
11.	T	(44)	26.	F	(2, 42)
12.	F	(48)	27.	T	(39)
13.	F	(46)	28.	F	(23)
14.	T	(31)	29.	F	(48)
15.	T	(9, 18)	30.	T	(30)

---

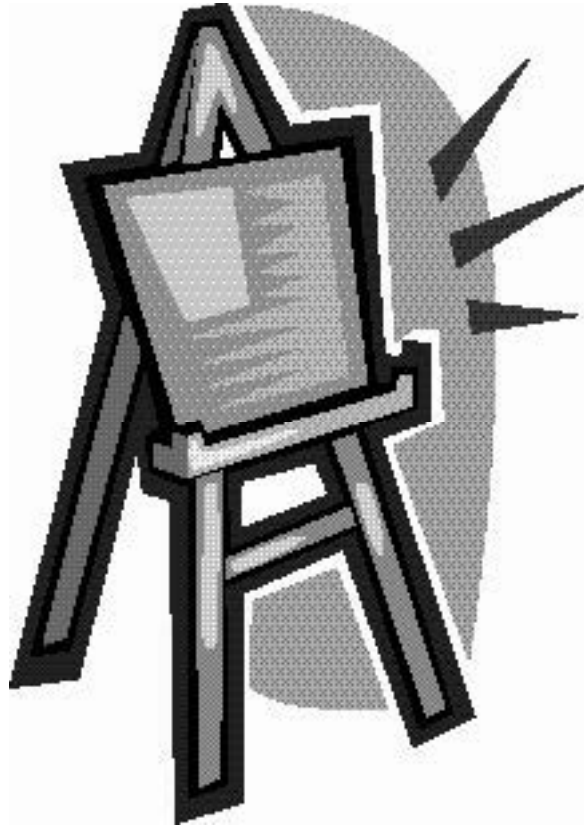
Numbers in parentheses are page numbers where answers can be found in the *Art Smart Bulletin* for 2021-2022 and 2022-2023. Correct spelling is not required for short answers.

**SPRING DISTRICT 2021-2022**

**A+ ACADEMICS**



University Interscholastic League



# Art Contest

grades 7 & 8

**DO NOT OPEN TEST  
UNTIL TOLD TO DO SO**

**2021-2022 Spring District Art Test Part B - Grades 7-8**  
**Art Elements Section**

1. The techniques of showing perspective by leaving out details and using paler colors are known as
  - a. scientific.
  - b. atmospheric.
  - c. linear.
  - d. none of the above
  
2. Complementary colors are most important in the composition of which of these works?
  - a. *A Roemer with Grapes, a Pewter Plate, and a Roll*
  - b. *The Harvesters*
  - c. *Mountains at Collioure*
  - d. *Still Life with Vegetables*
  
3. *Dalet Kaf* was created with a technique known as \_\_\_\_\_.
  
4. The foreground of *Ariadne Abandoned by Theseus* includes
  - a. Theseus' ship.
  - b. a small jewel chest.
  - c. a large urn.
  - d. a small dog.
  
5. The textures of the metal plates and of the bread shown in *A Roemer with Grapes, a Pewter Plate, and a Roll* provide an example of \_\_\_\_\_.
  
6. Why did Peale select the vegetables he painted in *Still Life with Vegetables*?
  - a. he liked their symbolic meaning
  - b. those were his favorite vegetables
  - c. those vegetables were in season
  - d. to examine their different color, shapes, and textures
  
7. One way the artist added visual interest to *Old Faithful Geyser, Yellowstone National Park* was by using
  - a. complementary colors.
  - b. thick, visible brushstrokes.
  - c. diagonal lines in the land and clouds.
  - d. contrasts of shape.

8. \_\_\_\_\_ is an example of an abstract painting created with geometric shapes.
9. The smallest of the following paintings is
- A Dutch Courtyard.*
  - Queen Henrietta Maria with Sir Jeffrey Hudson.*
  - Portrait of an Old Woman.*
  - Expectation.*

### True/False

10. In *The Small Cowper Madonna*, Mary's scarf is the same color as her gown.
11. The pomegranate in *Portrait of Michol (Miguel Pol?)* serves as a symbol with two meanings.
12. In *Oarsmen at Chatou*, Renoir uses dabs of orange and green paint to create the water.
13. Couse uses light and detail to focus attention on the quiver in *The Quiver Maker*.
14. The mood of *Three Marias at the Tomb* is more dramatic than the mood of *The Small Cowper Madonna*.
15. *Pink Cyclamen* was created with transparent watercolors on paper.

### Art History Section

16. During which art history period did the Industrial Revolution take place?
17. Which of these artists painted during the Baroque period?
- Kauffmann
  - Raphael
  - van Dyck
  - Hassam
18. Reynolds painted in a style called
- Impressionism.
  - Rococo.
  - Cubism.
  - Neoclassicism.
19. \_\_\_\_\_ is an example of an American Romantic style landscape.

20. Which of these artists is usually described as a Post-Impressionist?
- Cézanne
  - Derain
  - Hassam
  - Weber
21. Which of these artists was born in Russia and later moved to the United States?
- Asher Brown Durand
  - Max Weber
  - Childe Hassam
  - Morris Lewis
22. Popular and successful during his career, \_\_\_\_\_ was admired for his emotional yet dignified style.
23. Abraham van Beyeren learned to paint by
- copying works in museums.
  - studying with van der Weyden.
  - working with his brother-in-law.
  - working as a glassmaker.
24. Which of these pairs of artists knew each other?
- Monet and Renoir
  - Memling and van der Weyden
  - Kauffmann and Reynolds
  - all of the above

### **True/False**

25. The Neoclassicism style of painting developed during the Baroque period of art history.
26. Jacopo Empoli was born in the Italian city of Empoli.
27. Although de Vlieger painted many different kinds of paintings and even worked in other mediums, he is best known for his seascapes.
28. Hassam was an important influence on Gericault's work.
29. Pater's fear of being poor drove him to create hundreds of paintings for sale to art patrons.
30. To meet the demand for his work, Louis taught assistants to help him complete his paintings.

**2021-2022 Spring District Art Test - Grades 7-8  
(Part B)**

**Answer Key**

<b>Elements</b>	<b>History</b>
1. b (21)	16. Modern (36)
2. c (51)	17. c (2, 30)
3. stain painting (54)	18. d (39)
4. b (38)	19. <i>Haystack Mountain, Vermont</i> (42)
5. contrast (18, 32)	20. a (50)
6. d (41)	21. b (52)
7. c (46)	22. Van der Weyden (23)
8. <i>Expectation</i> (55)	23. c (32)
9. c (24, 56)	24. d (24, 38, 45)
10. F (25)	25. F (10, 36)
11. T (34)	26. T (27)
12. F (45)	27. T (31)
13. T (53)	28. F (48)
14. T (25, 27)	29. T (35)
15. F (43)	30. F (54)

---

Numbers in parentheses are page numbers where answers can be found in the *Art Smart Bulletin* for 2021-2022 and 2022-2023. Correct spelling is not required for short answers.