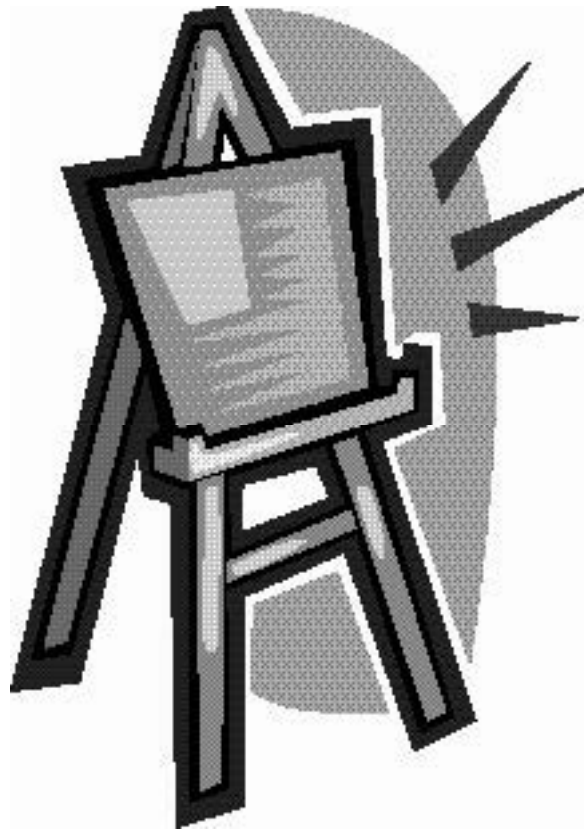


INVITATIONAL 2017-2018

A+ ACADEMICS



University Interscholastic League



Art Contest

grades 4, 5, & 6

**DO NOT OPEN TEST
UNTIL TOLD TO DO SO**

2017-2018 Invitational Art Test Part B - Grades 4-6
Art Elements Section

1. *Portrait of a Woman* was created with _____ paints.
2. The mood of *Frederick North, Later Fifth Earl of Guilford, in Rome* is
 - a. serious.
 - b. busy.
 - c. playful.
 - d. dramatic.
3. To keep eyes moving around *Flowers in a Basket and a Vase*, the artist used
 - a. loose, flowing brushstrokes.
 - b. diagonal lines.
 - c. a rhythm of color.
 - d. bright light.
4. The brushstrokes used to create *A Young Woman and Her Little Boy* can best be described as
 - a. quick and loose.
 - b. smooth and polished.
 - c. thick and rough.
 - d. soft and feathery.
5. In *Soldiers Playing Dice*, the metal armor and the feathers on its helmet provide an example of a contrast of _____.
6. To make viewers see depth or distance in a painting, an artist can
 - a. use warm colors in the foreground and pale ones in the background.
 - b. make distant objects smaller than closer ones.
 - c. leave out details of far-away objects.
 - d. all of the above
7. Which of these works is an abstract painting?
 - a. *The Kiss (Le Baiser)*
 - b. *The Fourteenth of July*
 - c. *La Siesta*
 - d. *To Miz-Pax Vobiscum*
8. *Virgin and Child with the Infant Saint John the Baptist* is called a _____ because of its shape.

9. The umbrella closest to viewers in *The Three Umbrellas* gives the painting a
- quiet, serious mood.
 - point of visual focus.
 - sense of movement.
 - strange, unreal feeling.

True/False

10. A triangle shape formed by figures in *The Gypsy Princesses* structures the composition.
11. Repeated touches of warm red color are used in *River Landscape* to draw viewers' eyes into the background.
12. Something in a painting that repeats and creates a kind of pattern is called rhythm.
13. Because still life paintings were considered unimportant at the time it was painted, *Bouquet of Flowers in a Terracotta Vase with Peaches and Grapes* is only about 16 inches tall.
14. In both *The Prefect Raffaele Raggi* and *Le Roi à la Chasse [The King at the Hunt]* viewers are given a low point of view looking up toward the sitters.
15. Small figures of people are included in *Rocky Headland with Wigwams in Foreground* to add liveliness to the image.

Art History Section

16. The subjects of Thomas Hill's paintings were mainly
- the American landscape.
 - his family life.
 - the French countryside.
 - political events of his time.
17. What was the nationality of the artist Jacob van Walscapelle?
18. Morisot was an important member of the original group of artists known as
- Fauvists.
 - Impressionists.
 - Surrealists.
 - Abstract Expressionists.
19. _____ was given the nickname "the American Chardin."

20. After her husband died, O’Keeffe lived and worked in
- New York.
 - Texas.
 - New Mexico.
 - California.
21. The _____ style got its name from a French word meaning wild beasts.
22. Each of the following family members worked in Veronese’s workshop except his
- brother.
 - father.
 - nephew.
 - sons.
23. Louis Le Nain was a member of the
- French Academy of Painting.
 - Hudson River School.
 - group known as Surrealists.
 - German Academy of Arts.
24. One artist very concerned with accurately capturing the effects of light in his paintings was
- Bonington.
 - Boudin.
 - van der Neer.
 - all of the above

True/False

25. Smooth, invisible brushwork is characteristic of Chardin’s personal painting style.
26. Fra Filippo Lippi spent his entire painting career in a monastery.
27. Because he worked so slowly and carefully, Pater only produced a few paintings.
28. *Portrait of the Duchess de Montebello with her Children* was painted before *Portrait of a Man with an Arrow* was.
29. Genre scenes first became popular subjects for paintings during the Baroque period.
30. Modern critics often admire the portraits Mengs created more than they do his history paintings.

**2017-2018 Invitational Art Test - Grades 4-6
(Part B)**

Answer Key

Elements			History		
1.	oil	(26, 67)	16.	a	(52)
2.	a	(45)	17.	Dutch	(38)
3.	c	(31)	18.	b	(53)
4.	b	(27)	19.	Carlsen	(57)
5.	texture	(18, 33)	20.	c	(60)
6.	d	(18)	21.	Fauvist	(56, 58)
7.	d	(15, 56, 63)	22.	b	(28)
8.	tondo	(34)	23.	a	(35)
9.	b	(58)	24.	d	(36, 47, 50)
10.	T	(19, 49)	25.	F	(43)
11.	F	(29)	26.	F	(24)
12.	T	(11, 19)	27.	F	(39)
13.	F	(44, 67)	28.	F	(25, 46)
14.	T	(32, 66)	29.	T	(30)
15.	F	(48)	30.	T	(42)

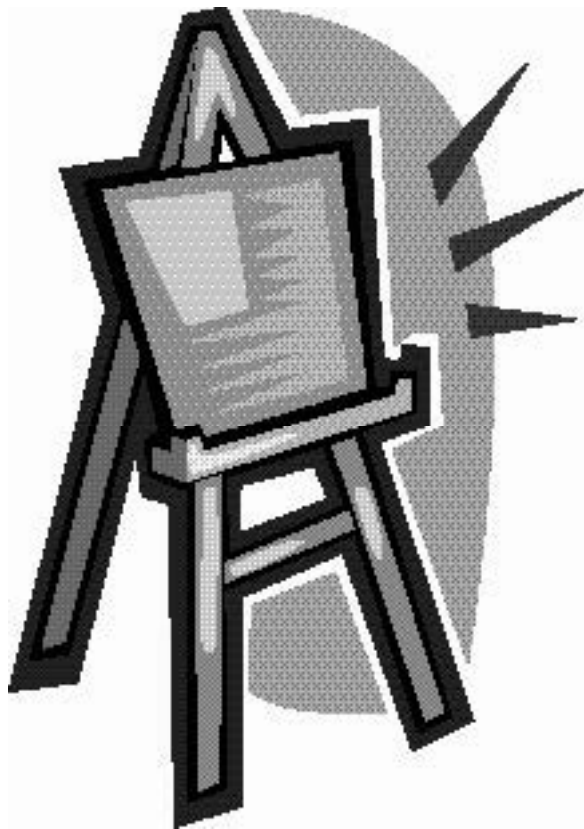
Numbers in parentheses are page numbers where answers can be found in the *Art Smart Bulletin* for 2017-2018 and 2018-2019. Correct spelling is not required for short answers.

INVITATIONAL 2017-2018

A+ ACADEMICS



University Interscholastic League



Art Contest

grades 7 & 8

**DO NOT OPEN TEST
UNTIL TOLD TO DO SO**

2017-2018 Invitational Art Test Part B - Grades 7-8
Art Elements Section

1. Colors are used in *Cabin Fever* to
 - a. separate the subject from the background.
 - b. create a sense of perspective.
 - c. focus attention on the two-dimensional reality of the painting.
 - d. suggest the chill of winter air.

2. Which of these genre scenes is the largest original painting?
 - a. *Soldiers Playing Dice*
 - b. *A Fête Champêtre During the Grape Harvest*
 - c. *Apple Harvest*
 - d. *Winter in Holland: Skating Scene*

3. What object in *Jack* first draws viewers' eyes into the picture?

4. The techniques of showing perspective by leaving out details and using paler colors are known as
 - a. scientific.
 - b. atmospheric.
 - c. linear.
 - d. none of the above

5. In *Madonna and Child with Angels*, gold is used as a symbol of _____.

6. Each of these paintings is based on real-world objects except
 - a. *The Fourteenth of July.*
 - b. *To Miz-Pax Vobiscum.*
 - c. *Train Coming in - Canyon, Texas.*
 - d. *The Kiss (Le Baiser).*

7. Quick, loose brushwork is used in *The Grand Canal* to
 - a. suggest movement.
 - b. encourage imagination.
 - c. create a spontaneous feeling.
 - d. produce a sketch to use for a later painting.

8. Shapes of the pomegranate, grapes and nuts provide an example of an artist's use of _____ in *Still Life with Fruit*.

9. *Forest Scene* and *River Landscape* are most different in their
- mood.
 - realistic detail.
 - type of subject.
 - use of human figures.

True/False

10. The direct gaze of one young woman draws viewers into the scene of *The Gypsy Princesses*.
11. *The Artist's Wife and Daughters in a Park at Heringsdorf* and *Frederick North, Later Fifth Earl of Guilford, in Rome* were both created with the same type of paint.
12. Color and lines can be used in different ways to create different moods in a painting.
13. The artist carefully arranged the mother and children in *Portrait of the Duchess de Montebello with her Children* to give his composition formal balance and a sense of stability.
14. Texture and detail are more important than composition in *Still Life with a White Mug*.
15. In *A Young Woman and Her Little Boy*, the color of the background strengthens the visual impact of the mother's dress.

Art History Section

16. Renaissance is a French word meaning _____.
17. Paul Kane became interested in recording the life of the native people of his country while he was studying in
- England.
 - France.
 - Italy.
 - the United States.
18. Which woman painted at an earlier time, Morisot or Vallayer-Coster?
19. One of the earliest artists to make flowers a main subject for paintings was
- Annibale Carracci.
 - Jan Brueghel the Elder.
 - Louis Le Nain.
 - Carlo Dolci.

20. A characteristic commonly seen in Memling's work is
- rough, broken brushstrokes.
 - lots of elaborate detail.
 - quiet, gentle moods.
 - flat, simplified forms.
21. Which of these portraits was painted by a French artist?
- The Prefect Raffaele Raggi*
 - Le Roi à la Chasse [The King at the Hunt]*
 - Portrait of a Woman*
 - none of the above
22. During the time that Lippi was working in Florence, artists there were most concerned with
- the reality of the painted surface.
 - line and drawing.
 - ideas of illusion and reality.
 - light and color.
23. _____ was one of the first French artists to paint outdoors.
24. Veronese's father was a
- stonecutter.
 - silk merchant.
 - sailor.
 - sculptor.

True/False

25. Delicately drawn lines were a characteristic of the individual painting style Dufy developed in his later career.
26. *Saint John the Baptist Preaching in the Wilderness* was painted during the Baroque period.
27. Rivera painted murals in public buildings because he wanted art to be easily available to ordinary people.
28. Abstract art developed partly in response to rapid changes in science and technology.
29. Carlsen's nickname comes from the way he painted atmosphere and weather.
30. The same style was used to paint both *Midsummer Twilight* and *Bridal Veil Meadow, Yosemite*.

**2017-2018 Invitational Art Test - Grades 7-8
(Part B)**

Answer Key

Elements			History		
1.	c	(64)	16.	rebirth	(21)
2.	b	(67)	17.	a	(48)
3.	the (red) strap	(65)	18.	Vallayer- Coster	(44, 53)
4.	b	(22)	19.	b	(31)
5.	God's presence	(23)	20.	c	(25)
6.	b	(63)	21.	d	(26, 32, 66)
7.	c	(47)	22.	b	(24)
8.	rhythm	(11, 19, 38)	23.	Boudin	(50)
9.	a	(29, 37)	24.	a	(28)
10.	T	(49)	25.	T	(58)
11.	F	(45, 51)	26.	F	(42)
12.	T	(17, 19)	27.	T	(61)
13.	T	(46)	28.	T	(56)
14.	F	(43)	29.	F	(57)
15.	T	(27)	30.	F	(52, 55)

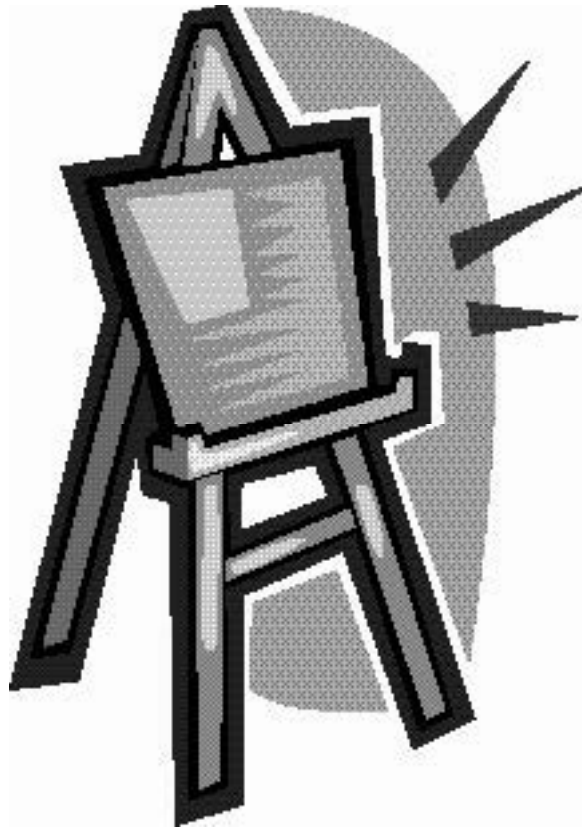
Numbers in parentheses are page numbers where answers can be found in the *Art Smart Bulletin* for 2017-2018 and 2018-2019. Correct spelling is not required for short answers.

FALL/WINTER DISTRICT 2017-2018

A+ ACADEMICS



University Interscholastic League



Art Contest

grades 4, 5, & 6

**DO NOT OPEN TEST
UNTIL TOLD TO DO SO**

2017-2018 Fall/Winter District Art Test Part B - Grades 4-6
Art Elements Section

1. The most important colors in *Virgin and Child with the Infant Saint John the Baptist* are
 - a. warm.
 - b. complementary.
 - c. cool.
 - d. primary.

2. To give a painting a peaceful mood, an artist might use _____ lines in the composition.

3. Which of these still life paintings includes images of living animals?
 - a. *Bouquet of Flowers in a Terracotta Vase with Peaches and Grapes*
 - b. *Still Life with Fruit*
 - c. *Flowers in a Basket and a Vase*
 - d. *Study in Grey*

4. *Train Coming in - Canyon, Texas* was created with _____ on paper.

5. The impression of sunlight in *Apple Harvest* is created with
 - a. touches of white paint.
 - b. long shadows from the setting sun.
 - c. warm yellow color.
 - d. blue sky and fluffy clouds.

6. *The Artist's Wife and Daughters in a Park at Heringsdorf* fits best into the _____ category of subjects.

7. Light, loose brushwork was used in *Anvers, L'entrée du Port (Entrance to Port of Anvers)* to
 - a. suggest the movement of the sea breeze.
 - b. make a quick record of the scene to remember later.
 - c. give the work a spontaneous, caught-in-the-moment feeling.
 - d. none of the above

8. Light shines into *The Annunciation* from
 - a. several directions at once.
 - b. behind the angel.
 - c. over the viewer's shoulder.
 - d. directly above Mary's head.

9. In *The Grand Canal*, the artist used each of these techniques of perspective except
- showing only foreground objects in sharp detail.
 - making the canal appear narrower in the distance.
 - using warm color in the foreground but not in the background.
 - picturing more distant buildings smaller than closer ones.

True/False

10. The finch the Child holds in *Madonna and Child with Angels* is a symbol of the Holy Spirit.
11. Contrasts of texture are more important in *Soldiers Playing Dice* than in *The Gypsy Princesses*.
12. The illusion of depth or distance in a painting is called point of view.
13. Clothing gives viewers information about the people pictured in both *La Siesta* and *A Fête Champêtre During the Grape Harvest*.
14. The muted and neutral colors in *Landscape with Peasants* give the painting a dramatic, gloomy mood.
15. The size of *Le Roi à la Chasse [The King at the Hunt]* holds viewers at a distance from the sitter.

Art History Section

16. Morisot is best-known for works created in the _____ style.
17. Sir Anthony van Dyck is particularly famous for portraits he painted while he lived in
- Germany.
 - France.
 - England.
 - Belgium.
18. Thomas Hill was a member of the group of artists known as the _____.
19. Jacob van Ruisdael specialized in painting
- dramatic landscapes.
 - life-like still lifes.
 - “fête galante” genre scenes.
 - sweet religious images.

20. Which of these artists was Irish?
- Carracci
 - Hamilton
 - Mengs
 - Rothenberg
21. The type of brushwork most characteristic of Chardin's personal painting style is
- bumpy and textured.
 - light and sketchy.
 - thick and rough.
 - smooth and polished.
22. In addition to painting, Raoul Dufy also
- designed ceramics.
 - illustrated books.
 - designed stage sets.
 - all of the above
23. During the _____ art history period, artists became skilled at imitating the effects of dust and moisture in the atmosphere to show perspective.
24. Which of these works was painted last?
- Rocky Headland with Wigwams in Foreground*
 - The Kiss (Le Baiser)*
 - The Finding of Moses*
 - Midsummer Twilight*

True/False

25. In creating his portraits, Bronzino was mainly concerned with capturing his sitter's personality in a casual image.
26. La Fresnaye served as a soldier in the French army.
27. The Romantic style of painting developed earlier than the Cubist style did.
28. Assistants in his workshop helped Memling create the many paintings his customers wanted.
29. Gérard first studied art with his father, who was a sculptor.
30. To create *Jack*, Jessup used brushwork influenced by the techniques of the Pointillist style.

**2017-2018 Fall/Winter District Art Test - Grades 4-6
(Part B)**

Answer Key

	Elements		History
1.	d	(15, 34)	16. Impressionist (53)
2.	horizontal	(17)	17. c (32)
3.	c	(31)	18. Hudson River School (52)
4.	watercolors	(60, 67)	19. a (37)
5.	c	(54)	20. b (45)
6.	genre	(51)	21. c (43)
7.	a	(50)	22. d (58)
8.	b	(24)	23. Renaissance (22)
9.	a	(47)	24. b (62)
10.	F	(23)	25. F (27)
11.	T	(33, 49)	26. T (59)
12.	F	(10, 11, 18)	27. T (9, 11, 41, 56)
13.	T	(39, 61)	28. T (25)
14.	F	(35)	29. F (46)
15.	T	(66)	30. T (65)

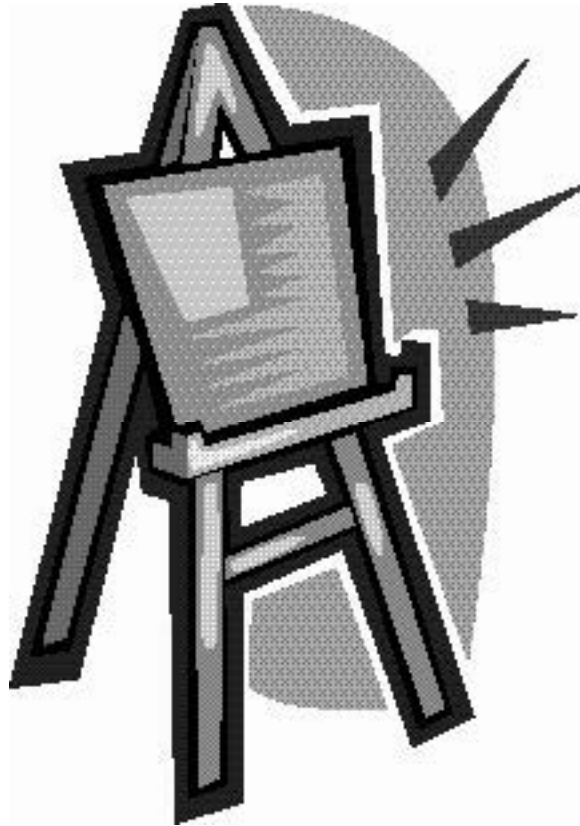
Numbers in parentheses are page numbers where answers can be found in the *Art Smart Bulletin* for 2017-2018 and 2018-2019. Correct spelling is not required for short answers.

FALL/WINTER DISTRICT 2017-2018

A+ ACADEMICS



University Interscholastic League



Art Contest

grades 7 & 8

**DO NOT OPEN TEST
UNTIL TOLD TO DO SO**

2017-2018 Fall/Winter District Art Test Part B - Grades 7-8
Art Elements Section

1. Something that reflects all the light that hits it looks _____.
2. Which of these paintings was created with oil on canvas?
 - a. *Cabin Fever*
 - b. *The Finding of Moses*
 - c. *Winter in Holland: Skating Scene*
 - d. *Frederick North, Later Fifth Earl of Guilford, in Rome*
3. To lead viewers into the background of *Midsummer Twilight*, the artist used a rhythm of
 - a. color.
 - b. line.
 - c. shape.
 - d. all of the above
4. The armor and sashes in *The Prefect Raffaele Raggi* offer examples of _____.
5. Light and shadow are used in *Jack* to
 - a. create a dramatic mood.
 - b. show three-dimensional form.
 - c. suggest a time of day.
 - d. focus attention on the subject.
6. The point of view used in *Portrait of the Duchess de Montebello with her Children* is _____ than the one in *A Fête Champêtre During the Grape Harvest*.
7. To add visual interest to *Soldiers Playing Dice*, the artist used
 - a. loose brushwork.
 - b. complementary colors.
 - c. a variety of textures.
 - d. a rhythm of diagonal lines.
8. Which of these paintings would you expect to have the roughest surface?
 - a. *The Three Umbrellas*
 - b. *Saint John the Baptist Preaching in the Wilderness*
 - c. *Still Life with Fruit*
 - d. *The Artist's Wife and Daughters in a Park at Heringsdorf*

9. *Study in Grey* and *Still Life with a White Mug* are most different in their
- type of subject.
 - sense of depth.
 - use of color.
 - composition.

True/False

10. *The Kiss (Le Baiser)* is smaller than *Anvers, L'entrée du Port (Entrance to Port of Anvers)*.
11. The techniques of using narrowing lines and proportionally smaller objects to show distance are known as atmospheric perspective.
12. Texture and detail are more important than shape and color in *Apple Harvest*.
13. Drawn lines are an important element in *The Fourteenth of July*.
14. The form of the cliff in *Rocky Headland with Wigwams in Foreground* creates a feeling of strength in the image.
15. The artist used light and color to separate the sitter from the background in *Portrait of a Man with an Arrow*.

Art History Section

16. Which of these works is an example of a Baroque painting?
- The Grand Canal*
 - Landscape with Peasants*
 - River Landscape*
 - none of the above
17. Did van Walscapelle paint at an earlier or later time than Jan Brueghel the Elder?
18. Another important painter in Lippi's family was his
- son.
 - brother.
 - cousin.
 - father.
19. In addition to painting, _____ taught art in both Germany and the United States.

20. Which of these events occurred during the Modern period of art history?
- Galileo's scientific discoveries
 - invention of the steam engine
 - invention of television
 - invention of the printing press
21. *Bridal Veil Meadow, Yosemite* is an example of the _____ style.
22. Hugh Douglas Hamilton worked in
- Rome and Venice.
 - Brussels and Paris.
 - London and Rome.
 - Berlin and New York.
23. Aert van der Neer often painted
- still lifes.
 - religious images.
 - portraits.
 - night scenes.
24. In which of these pairs are both artists of the same nationality?
- Morisot and O'Keeffe
 - Diaz de la Peña and Rivera
 - Carracci and Ruisdael
 - Bronzino and Dolci

True/False

25. Shockingly bright colors and twisted forms are typical of the Fauvist style.
26. The formal composition and decorative details in *Madonna and Child with Angels* were new developments for Renaissance artists.
27. Wiley borrows from great art of the past to show ordinary people as important individuals with power and dignity.
28. Many of the customers who bought paintings from Vallayer-Coster were members of the French nobility.
29. Because Catena was a poor businessman, he lived in poverty in spite of his artistic talent.
30. Mengs was a leading artist in the development of the Neoclassical style.

**2017-2018 Fall/Winter District Art Test - Grades 7-8
(Part B)**

Answer Key

Elements			History		
1.	white	(15)	16.	b	(2, 35)
2.	b	(67)	17.	later	(31, 38)
3.	d	(19, 55)	18.	a	(24)
4.	contrast	(32)	19.	Hofmann	(63)
5.	b	(65)	20.	b	(40)
6.	lower	(39, 46)	21.	Romantic	(40, 52)
7.	c	(33)	22.	c	(45)
8.	a	(58)	23.	d	(36)
9.	c	(43, 57)	24.	d	(27, 34)
10.	F	(67)	25.	T	(9, 56, 58)
11.	F	(22)	26.	F	(23)
12.	F	(54)	27.	T	(66)
13.	T	(59)	28.	T	(44)
14.	T	(48)	29.	F	(26)
15.	T	(25)	30.	T	(42)

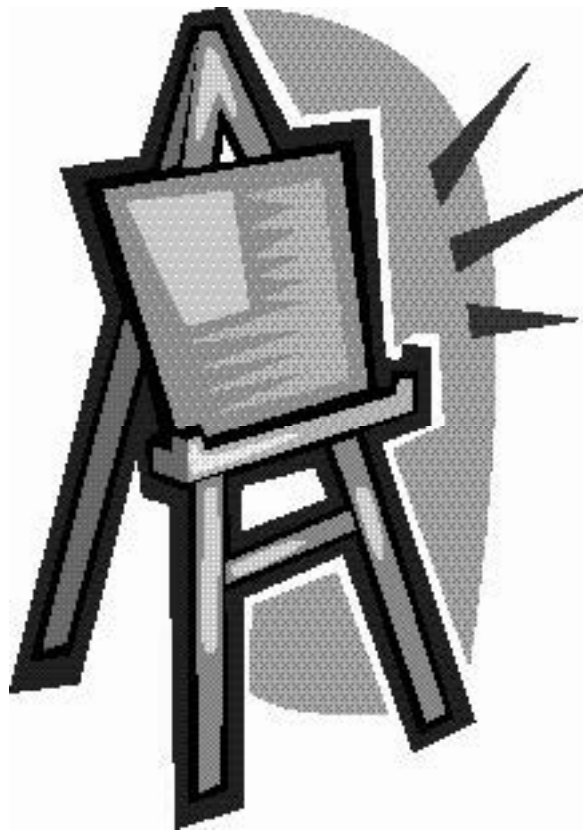
Numbers in parentheses are page numbers where answers can be found in the *Art Smart Bulletin* for 2017-2018 and 2018-2019. Correct spelling is not required for short answers.

SPRING DISTRICT 2017-2018

A+ ACADEMICS



University Interscholastic League



Art Contest

grades 4, 5, & 6

**DO NOT OPEN TEST
UNTIL TOLD TO DO SO**

2017-2018 Spring District Art Test Part B - Grades 4-6
Art Elements Section

1. The most important lines in *Midsummer Twilight* are
 - a. curved.
 - b. diagonal.
 - c. horizontal.
 - d. vertical.

2. Something in a painting that stands for or suggests an idea is called a _____.

3. The artist used a pyramid or triangle shape to structure the composition of
 - a. *Madonna and Child with Angels*.
 - b. *The Gypsy Princesses*.
 - c. *Portrait of the Duchess de Montebello with her Children*.
 - d. all of the above

4. In *Saint John the Baptist Preaching in the Wilderness*, the saint holds
 - a. a sword.
 - b. a lily.
 - c. an arrow.
 - d. a cross.

5. In *The Fourteenth of July*, the artist gave viewers a point of view as if they are
 - a. sitting at a table beside the figures.
 - b. high above and looking down on the scene.
 - c. seeing the image from several viewpoints at once.
 - d. looking sharply up toward important sitters.

6. The mood of *Forest Scene* is _____.

7. The surface of *The Basket Chair* is
 - a. smooth and polished.
 - b. bumpy.
 - c. velvety.
 - d. rough with thick paint.

8. *Bouquet of Flowers in a Terracotta Vase with Peaches and Grapes* is _____ in size than *Flowers in a Basket and a Vase*.

9. *A Fête Champêtre During the Grape Harvest* and *Apple Harvest* are most alike in their
- type of subject.
 - use of color.
 - attention to detail.
 - brushwork.

True/False

10. The artist used a shallow visual space in the composition of *Virgin and Child with the Infant Saint John the Baptist* to make the figures seem close to viewers.
11. A rhythm of curved lines helps create the mood of *Landscape with Peasants*.
12. Visible, swirling brushstrokes are used in *Le Roi à la Chasse [The King at the Hunt]* to create a sense of movement.
13. Using complementary colors together in a painting is an example of contrast.
14. The way the artist painted the floor in *The Annunciation* creates a sense of perspective.
15. Color and light are used to separate the sitter from the background in *Portrait of a Man with an Arrow*.

Art History Section

16. _____ is most famous for painting wall murals in public buildings.
17. The nationality of Sir Anthony van Dyck was
- British.
 - French.
 - Italian.
 - none of the above
18. Which work was painted earlier, *The Kiss (Le Baiser)* or *The Grand Canal*?
19. One type of subject Chardin often chose for a painting was
- a genre scene.
 - a history painting.
 - a portrait.
 - an abstract image.

20. Bronzino served as an official painter to the
- King of England.
 - Duke of Florence.
 - Queen of France.
 - rulers of Germany.
21. Emil Carlsen was born in the country of _____.
22. Which of the following occurred during the Modern period of art history?
- invention of airtight tubes to carry oil paint
 - development of computers
 - invention of the printing press
 - the Great Depression
23. Besides painting and teaching, Hofmann was also
- a wallpaper designer.
 - an inventor.
 - a magazine illustrator.
 - an architect.
24. An artist famous for the hundreds of sketches he created while traveling across his country is
- Catena.
 - Hill.
 - Kane.
 - Boudin.

True/False

25. Hamilton's first art lessons came from his father, who was a sculptor.
26. The Pointillist style got its name from the way artists using it applied their paints.
27. Both *Train Coming in - Canyon, Texas* and *Cabin Fever* were painted by women artists.
28. The father and son of David Teniers the Younger were both painters.
29. *River Landscape* was painted during the Baroque period of art history.
30. Dufy began his career painting in the Fauvist style, but later turned to using the Impressionist style because of his interest in the effects of light.

**2017-2018 Spring District Art Test - Grades 4-6
(Part B)**

Answer Key

Elements			History		
1.	b	(55)	16.	Rivera	(61)
2.	symbol	(12)	17.	d	(32)
3.	d	(19, 23, 46, 49)	18.	<i>The Grand Canal</i>	(47, 62)
4.	d	(42)	19.	a	(43)
5.	c	(59)	20.	b	(27)
6.	dramatic [or] gloomy	(37)	21.	Denmark	(57)
7.	d	(53)	22.	a	(40)
8.	larger	(31, 44, 67)	23.	b	(63)
9.	a	(39, 54)	24.	c	(48)
10.	T	(34)	25.	F	(45)
11.	F	(35)	26.	T	(41, 54)
12.	F	(66)	27.	T	(60, 64)
13.	T	(18)	28.	T	(33)
14.	T	(24)	29.	F	(29)
15.	T	(25)	30.	F	(58)

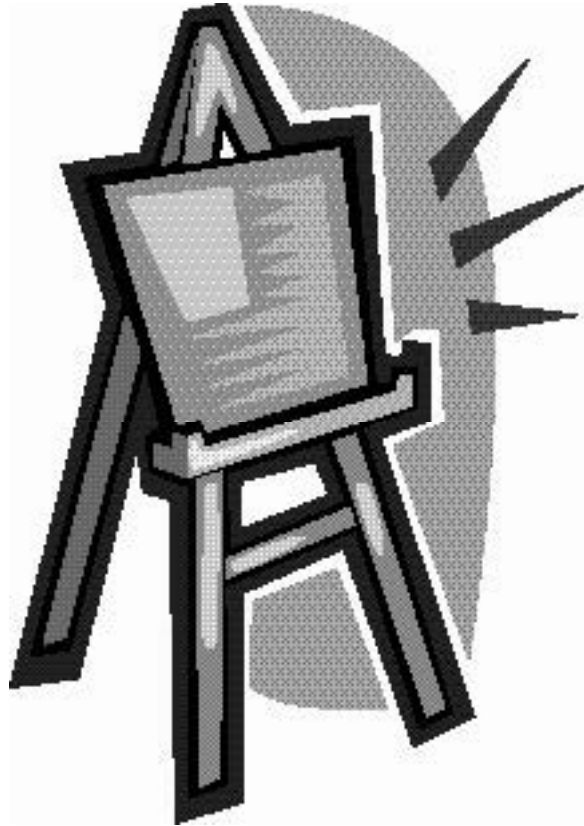
Numbers in parentheses are page numbers where answers can be found in the *Art Smart Bulletin* for 2017-2018 and 2018-2019. Correct spelling is not required for short answers.

SPRING DISTRICT 2017-2018

A+ ACADEMICS



University Interscholastic League



Art Contest

grades 7 & 8

**DO NOT OPEN TEST
UNTIL TOLD TO DO SO**

2017-2018 Spring District Art Test Part B - Grades 7-8
Art Elements Section

1. Which of these elements is least important in *The Gypsy Princesses*?
 - a. shape
 - b. color
 - c. texture
 - d. perspective

2. People are included in *Bridal Veil Meadow, Yosemite* to
 - a. create a sense of perspective.
 - b. draw viewers into the scene.
 - c. symbolize mankind's unimportance.
 - d. all of the above

3. The colors red and green are called _____.

4. Gently flowing curves in *La Siesta* serve to
 - a. add liveliness.
 - b. keep viewers eyes moving around the image.
 - c. help create a peaceful mood.
 - d. suggest a setting for the figures.

5. *Rocky Headland with Wigwams in Foreground* was created with _____
on _____.

6. Contrasts between light and dark are least important in
 - a. *The Kiss (Le Baiser)*.
 - b. *The Artist's Wife and Daughters in a Park at Heringsdorf*.
 - c. *Virgin and Child with the Infant Saint John the Baptist*.
 - d. *Flowers in a Basket and a Vase*.

7. A rhythm of shapes is formed by _____ in *Midsummer Twilight*.

8. The composition of *The Annunciation* is anchored by
 - a. a vertical column.
 - b. a stable horizontal base.
 - c. large human figures.
 - d. a pyramid shape.

9. In which of these pairs of paintings are the moods most similar?
- River Landscape* and *Forest Scene*
 - Portrait of a Man with an Arrow* and *Frederick North, Later Fifth Earl of Guilford, in Rome*
 - Still Life with Fruit* and *Study in Grey*
 - Landscape with Peasants* and *A Fête Champêtre During the Grape Harvest*

True/False

10. Objects in *Soldiers Playing Dice* offer information about the lives of people in the scene.
11. Colors and objects in *Madonna and Child with Angels* served as symbols that carried messages to viewers about the meaning of the image.
12. The artist used a rhythm of lines to add liveliness to *Apple Harvest*.
13. *Le Roi à la Chasse [The King at the Hunt]* is approximately twice as large as *The Prefect Raffaele Raggi*.
14. A picture of the President of the United States signing a bill into law would be a genre scene.
15. The placement of the knife in *Still Life with a White Mug* is important for suggesting three-dimensional depth.

Art History Section

16. What was the nationality of the artist who painted *The Grand Canal*?
17. Georgia O’Keeffe is famous for painting
- portraits.
 - flowers.
 - religious images.
 - family life.
18. *Portrait of the Duchess de Montebello with her Children* shows the characteristics of the _____ style.
19. Which of the following was painted before *The Basket Chair* was?
- Anvers, L’entrée du Port (Entrance to Port of Anvers)*
 - Cabin Fever*
 - The Fourteenth of July*
 - Study in Grey*

20. The practice of painting for a general market instead of on commission for a patron first became common during the _____ period.
21. Raoul Dufy painted works in the style called
- Impressionism.
 - Fauvism.
 - Cubism.
 - all of the above
22. One of the founding members of the French Academy of Painting was
- Le Nain.
 - Bronzino.
 - Mengs.
 - Chardin.
23. Which of the following best describes Hofmann?
- teacher, magazine illustrator, painter
 - architect, engraver, painter
 - inventor, painter, teacher
 - illustrator, painter, stage designer
24. Other painters in Vallayer-Coster's family included her
- mother.
 - daughter.
 - father.
 - son.

True/False

25. Both Catena and Veronese did most of their work in the Italian city of Venice.
26. An American invention for holding paints helped make outdoor painting practical for the Impressionists.
27. Tax records of the time show that van der Neer was one of the wealthiest people in his city.
28. Many of the younger Impressionist painters considered Pissarro, who was the oldest of the group, as a guide and father figure.
29. The colors and brushwork used to create *Jack* are characteristic of the Fauvist style.
30. Ruisdael's father and uncle were both painters who influenced his work.

**2017-2018 Spring District Art Test - Grades 7-8
(Part B)**

Answer Key

Elements			History		
1.	c	(49)	16.	British	(47)
2.	d	(52)	17.	b	(60)
3.	complementary	(15, 16)	18.	Neoclassical	(46)
4.	c	(61)	19.	a	(50, 53)
5.	oil / paper	(48, 67)	20.	Baroque	(30)
6.	b	(51)	21.	d	(58)
7.	rooftops	(19, 55)	22.	a	(35)
8.	a	(24)	23.	c	(63)
9.	b	(25, 45)	24.	a	(44)
10.	T	(33)	25.	T	(26, 28)
11.	T	(23)	26.	T	(40)
12.	F	(54)	27.	F	(36)
13.	T	(67)	28.	T	(54)
14.	F	(9, 14)	29.	F	(65)
15.	T	(43)	30.	T	(37)

Numbers in parentheses are page numbers where answers can be found in the *Art Smart Bulletin* for 2017-2018 and 2018-2019. Correct spelling is not required for short answers.