



DSHS THEATR 

# Tech Packet

**Director: Daniel Baxter**

**Principal: Angela Gamez**

**Fine Arts Coordinator: Scott Schumann**

**Contest Packet and Checklist: [HERE](#)**

## ARRIVING AT DSHS

Schools arriving at DSHS should turn right on Sportsplex Drive from Highway 290. Schools can unload their shows directly into the shop at the back of the auditorium. Buses can park in the lot behind the Auditorium. Patrons can park in the lot between the Stadium and the Auditorium.

## Unit Set

All elements of the UIL Approved Unit Set will be available, including two door units, one French door unit, and one window unit. Standard stage weight sand bags will be available for door/window units.

## Host Crew

Each school will have a runner to guide your school from place to place on campus. Two CHS students will be available to assist schools during 7 minute set up and strike.

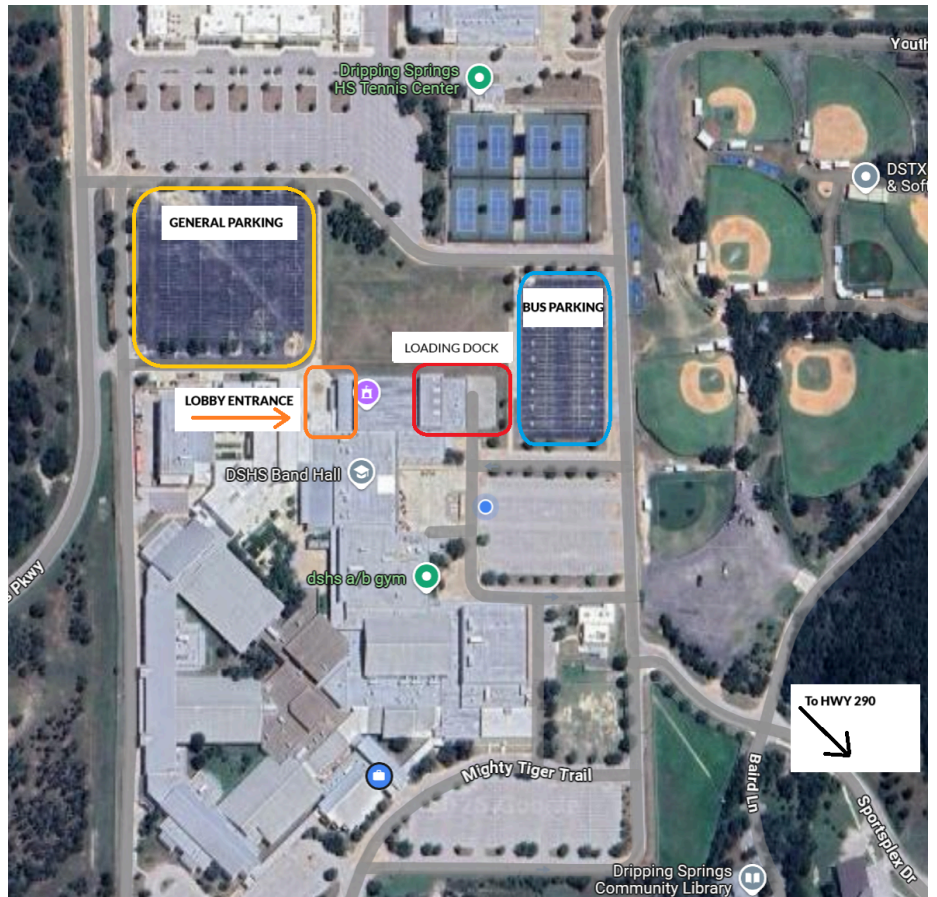
One student will be backstage and one will be in the booth. BK Goodman is the contest manager. Daniel Baxter is the Facility Technical Director and will be in the theatre to assist during tech rehearsals. He will not assist during performances. Joe Lombardo will be the Contest Stage Manager. He will be backstage to assist during tech rehearsals. During the run of the show he will hand the show over and give time to your company stage manager.

If you have any questions about this you can contact Daniel Baxter at (210) 426-7859.

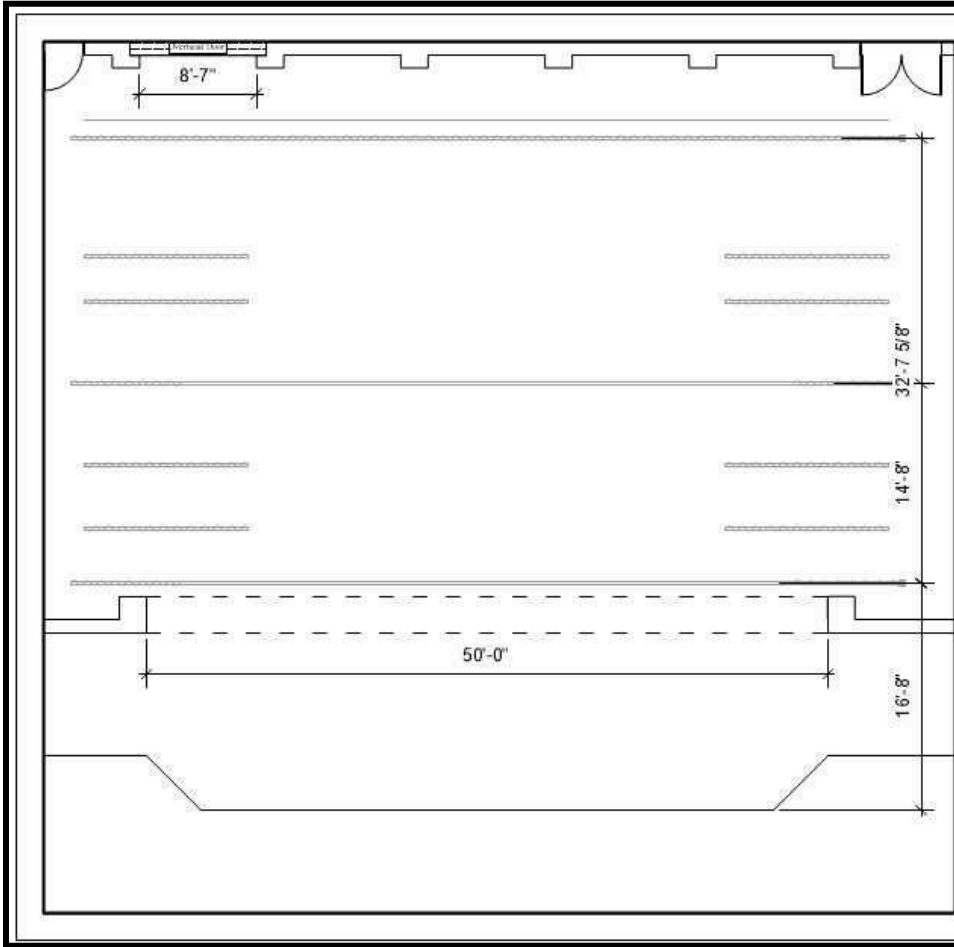
## Audience /Concessions

Patrons can purchase tickets at the box office in the auditorium lobby. Tickets are \$7 for ages five and up. One ticket will get you into all shows.

- Absolutely NO photography or video recording of ANY KIND will be allowed during a performance.
- NO FOOD OR DRINKS of any kind in the auditorium.
- Do not leave the auditorium during a performance unless there is an extreme emergency. If you must exit the auditorium, do so as quietly as possible (be sure to hold the doors).
- If you leave the auditorium, you will NOT be able to re-enter during the performance.
- There will be no late seating.
- Please open any cough drop wrappers prior to a performance.
- POWER OFF all cell phones/electronic devices prior to a performance.
- Please keep celebrations appropriate.
- Bathrooms and concessions are available in the lobby.



## Stage Dimensions



### Proscenium Arch:

50' Wide

20' Height

18' Trim Height

From front of stage to main curtain (apron): approx. 16'-8"

### Distance from main curtain to:

Mid Traveler: approx. 14'-8"

Rear Traveler: approx. 32'-7 5/8".

### Power Outlets:

Standard power outlets are available on the walls Downstage Left, Downstage Right, across the Upstage wall, and in floor pockets Upstage Right and Upstage Left.

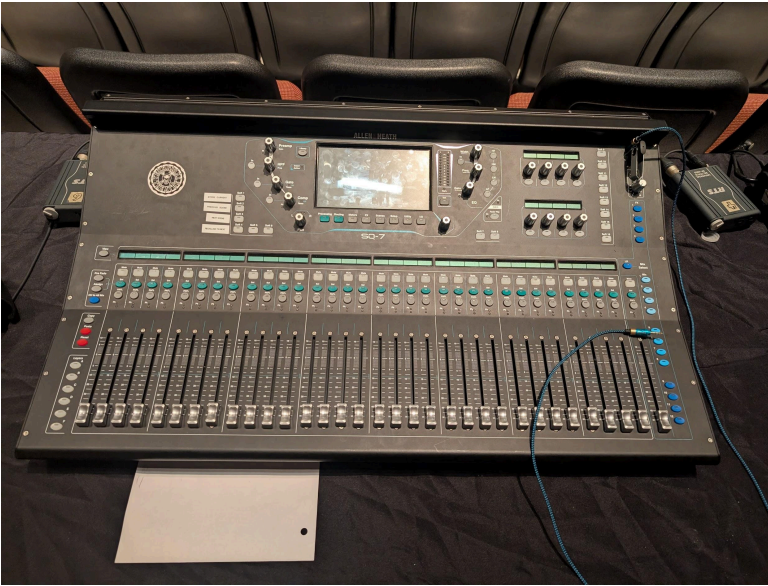
### Atmospherics Effects:

Water based haze and fog machines are generally permitted but must be disclosed to the Contest Manager and Facility Technical Director.

## Sound

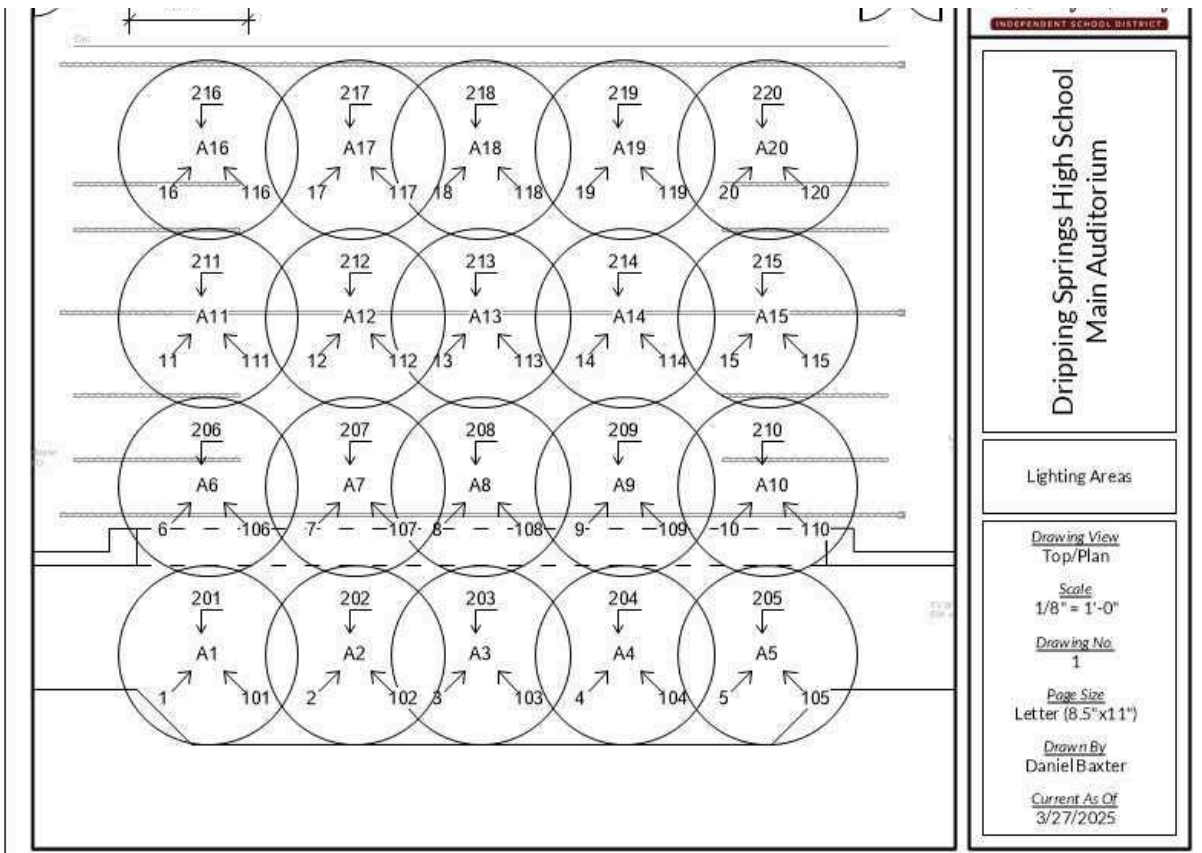
Allen and Heath SQ-7

3.5mm Aux Cable available

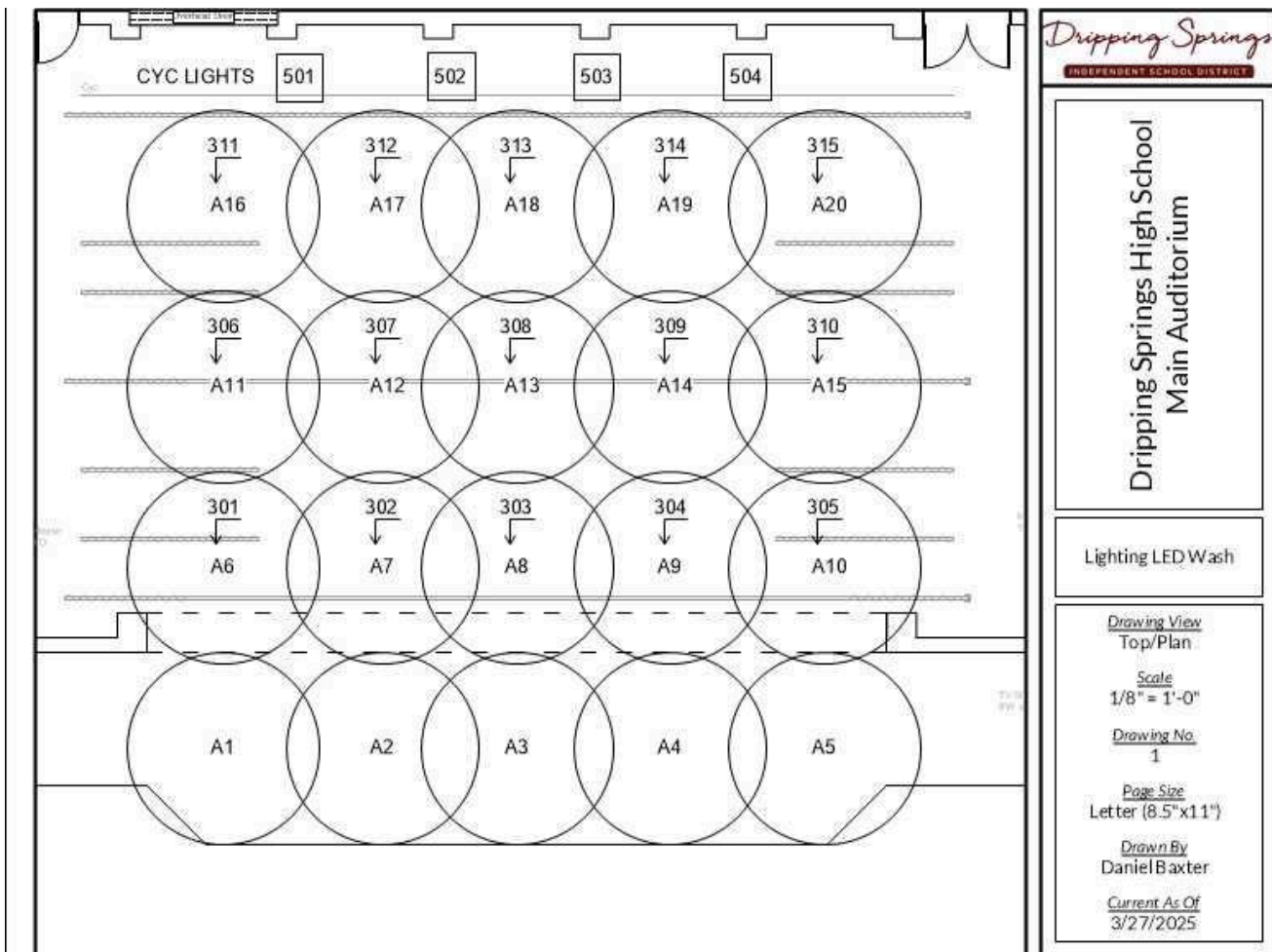


## Lighting

Light Plot: 20 areas







**LIGHT BOARD:**

ETC ION Console EOS Series

LED Red, Green, Blue COLOR WASHES AVAILABLE

LED Red, Green, Blue Cyc Color Mixing available

- Schools may submit lighting cues to Dripping Springs High School to have them programmed before the tech rehearsal. **Deadline: Wednesday, April 9**
  - [Lighting Cue Sheet](#) (Will make a copy.)
  - Submit Cue Sheet [HERE](#)
- Lighting technicians will be able to program cues into the board during their school’s technical rehearsal.
- Area Front Lights, LED wash, and LED Cyc are pre-programmed on faders with RGB Color mixing available.