



Rock Hill High
School 16061 Coit
Road
Frisco, TX 75035
469-219-2300

(campus)

469-219-2000

(district)

Dear Colleagues,

We are pleased to host the 6A Region I One-Act Play Contest, and we are looking forward to making this a positive educational opportunity for all. If there is anything we can do to help make this an enjoyable experience for your company and your school, please let us know. We will do everything in our power to make this contest a wonderful and memorable event.

For questions:

Racy Kane - rlkane@prosper-isd.net, (903) 452-7663

Tim Doyle - tjdoyle@prosper-isd.net, (512)413-7952

[More information can be found on the tournament website.](#)

We have enclosed an information packet detailing everything from schedules for rehearsals and contest to the stage dimensions and lighting packets.

Again, we welcome your school and company to share this special time. If we can answer any questions, feel free to call.

Sincerely,

Tim Doyle - Prosper ISD Fine Arts Coordinator

Racy Kane - Prosper ISD Director of Academic Competition and Regional Meet Director

Conference 6A, Region 1 One-Act Play Contest

Host School - Rock Hill High School

CONTEST MANAGER

Karen Gossett

Contact Phone: 940-391-9740 (cell)

karenpagegossett@hotmail.com

REHEARSAL SCHEDULE

Wednesday, April 23th, 2025

Arrive in Loading Dock with all students and staff

Keller High School 8:30 AM

Arlington Martin School 9:45 AM

Keller Central High School 11:00 AM

Flower Mound High School 12:15 PM

JJ Pearce High School 1:30 PM

Frenship High School 2:45 PM

CONTEST SCHEDULE

Thursday, April 24th, 2025

Director's Meeting: 11:00 AM (Green Room)

The following times are approximate - encourage people to arrive 15-30 minutes before the scheduled time in case we are running early.

11:00am	Director's Meeting
12:00pm	Silent Sky - Keller
1:00pm	House of Bernarda Alba - Arlington Martin
2:00pm	Summer & Smoke - Keller Central
3:00pm	Silent Sky - Frenship
4:00pm	Wit - Flower Mound
5:00pm	A Midsummer Night's Dream - JJ Pearce

Note that the first 2 shows will gain access to dressing rooms by 8:30am. All others will gain access to dressing rooms by 10:45am before the Director's Meeting.

Critiques & Awards: 6:30 PM (estimated)

Awards will take place following the verification of rankings. Critiques will take place in the auditorium prior to the beginning of the Awards Ceremony. Adjudicators will draw for which schools they will critique after they have submitted their rankings.

Awards Given:

Two Advancing Plays
One Alternate
2 Best Performers
8 All-Star Cast
8 Honorable Mention All-Star Cast
All-Star Technicians (1 per school)
Best Tech Crew Plaque

ADJUDICATOR INFORMATION AND BIOS

Eric Porter - 1414 Dairy Ashford, Apt. 516, Houston, Tx. 77077

Cathy Huvar - 22407 Elsinore, Katy, Tx. 77450

Aquilla Aubrey - 13703 Berry Springs Dr., Houston, Tx. 77070

****Please mail your script directly to the judges at the addresses above****

(Do NOT require signature confirmation)

****Please mail scripts directly to judges before Tuesday, April 15, 2025****

In addition - please note your school name and the conference level of contest on the script

BIO INFORMATION

Eric Porter

Mr. Porter has been a professional actor for more than 25 years (Actor's Equity Association Member) and has worked at such theaters as The Cleveland PlayHouse, PCPA Theaterfest, Utah Shakespeare Festival, ACT and four shows in NYC...he holds an MFA in Acting from The American Conservatory Theater, and a BFA from University of Texas at Austin .He has taught public school in Texas for 20 years, directing One-Act Play, conducting UIL clinics and coaching speech; competed at the State level several times in the One-Act Play contest (1st runner up in 2000/ with Best Actress and Samuel French winner) and TFA(with State Champions in Duet Acting, Humorous Interp and National Champions in Dramatic Interp. Mr. Porter currently teaches competitive speech and theater at the Village School in Houston and Acting and Intro to Theater at Houston Community College . He has been connected to UIL since working in the UIL library and running the state OAP contest in college with Lynn Murray.

Cathy Huvar

Cathy Huvar holds a Bachelor of Science in Education degree in theatre from Texas State University and a Master of Arts degree in theatre from Stephen F. Austin State University. She has been actively involved in educational theatre and the UIL OAP process for over forty years as a teacher, director, contest manager and adjudicator having judged all classifications and levels of OAP competition. Ms. Huvar was named Texas Educational Theatre Association (TETA) Community College Educator of the Year in 1994 and received the TETA Emeritus Award in 2019. She also received the Texas Community College Speech and Theatre Association's Founders Award in 2016. She has held numerous offices and committee positions in TTAO as well as in the Community College division of TETA. She is a firm believer in the value of the UIL OAP contest for all students.

Aquila Aubrey

Aquilla Aubrey is a retired administrator from Aldine ISD where she managed and supported all performing and visual arts programs. She previously served as Contest Director for UIL Academics, Director for speech and debate contests and assistant director for one act play contests. With a B.F.A. in Theatre Arts from the U. S. International University in San Diego, and a Masters in Educational Administration from Prairie View A&M University, she has also worked with Disney to support a special reunion project through Aldine ISD. Her more than 32 years of experiences include elementary to secondary levels as classroom teacher, director, contest manager, adjudicator, and administrator. Additionally she has performed in community theatre, and worked as stage manager professionally. She believes that theatre is the impetus that allows directors to provide a platform or momentum for actors to breathe new life, innovation, and imagination on stage.

GENERAL SITE INFORMATION

Location of Contest

Rock Hill High School, Prosper ISD
16061 Coit Road
Frisco, TX 75035

Performance Attendance

Audiences will be permitted for all performances. Audiences will need to come in at the south Auditorium entrance (same place buses/trailers were parked). Concessions will be available for purchase and eating will be permitted in the lobby.

Admission is \$10 per person by card or cash. School personnel and students are free with ID.

Be On Time

Events will run as scheduled. PLEASE DO NOT BE LATE!

Rehearsal Documentation

Please be at least 30 minutes early for your rehearsal. This will ensure that we stay on schedule. When you arrive, please contact either the CM or host and someone will greet you at the back doors.

Directors, please bring all necessary documentation with you to rehearsal:

- Publisher permission (*not required if play is in public domain*)
- Proof of Royalties (*not required if play is in public domain*)
- Integrity script w/ cuts
- Community Standards Form w/ signature)

And if necessary:

- Substitution Forms
- Set Additions
- Permission to perform a play not on the approved list

There will be full disclosure at the rehearsal. Plan to rehearse with all the set pieces, fabrics, and items that you will use in performance (prop firearms, etc. must be cleared in rehearsal).

All weapons must be approved by the Contest Manager at the time of your rehearsal and must be stored/ locked up with the company following your rehearsal. No entrances may be made into the house with a weapon (*swords may be a different case; please communicate with the CM*).

Storage

Each school will have a designated area to store their scenery/equipment/ etc.. Expect to store set pieces/props in this space. You may also keep items in your dressing room.

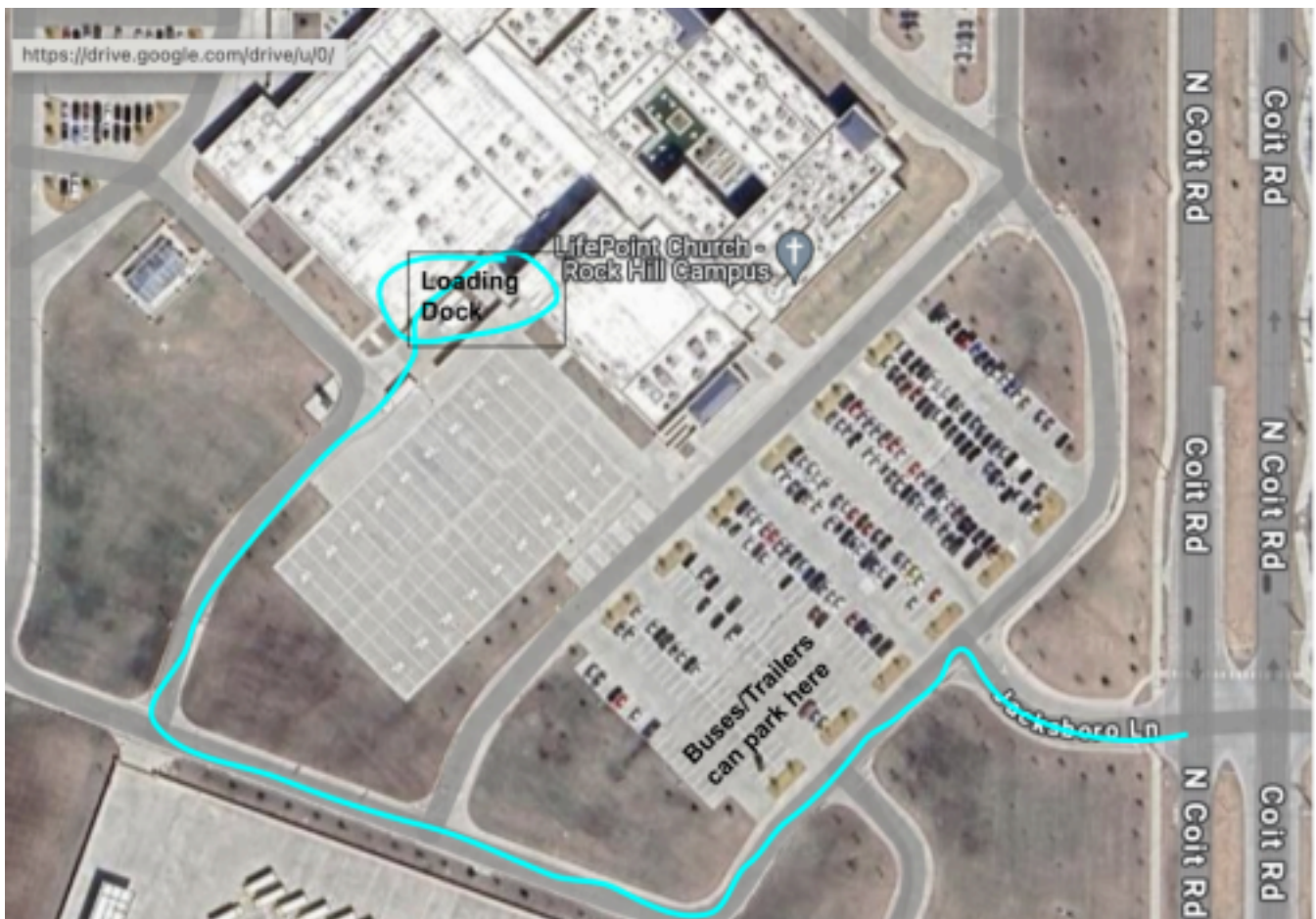
Dressing Rooms

Dressing rooms will be available throughout the contest day for each company starting at 8:30am for the first 2 shows and 10:45am for the remaining shows (prior to the 11:00 Director's Meeting). Please contact the site contact person in advance if you will need to be dropped off prior to your scheduled arrival for your rehearsal. Please talk to your students about making sure that everyone stays in their area and doesn't roam the hall or play music loudly.

Unloading/Rehearsals

Schools will unload equipment/scenery at the loading dock at the time of your rehearsal. Our loading dock is truck height, so vehicles may need to consider this when backing in. To access the loading dock, drive to the south side of the building, turn in on Jacksboro and drive around the parking lot to the back of the band pad. Buses/Trailers can park at the back of the parking lot outside the Auditorium entrance.

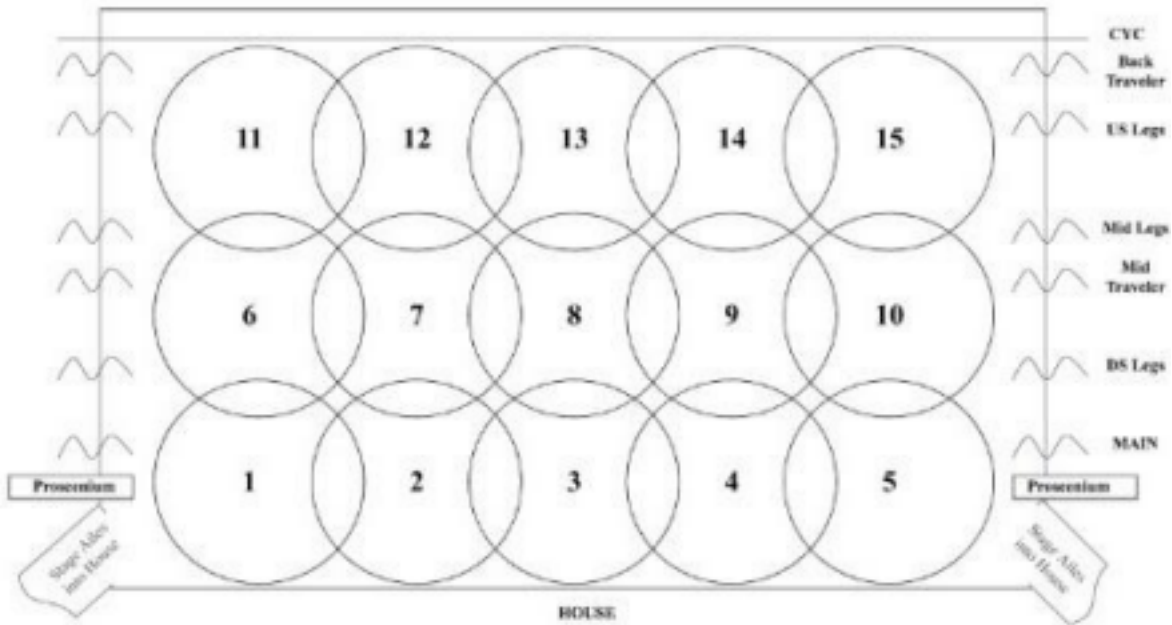
Please DO NOT drive on the band pad - the concrete is not rated for vehicles.



Companies may unload all scenery, etc. into the shop when given the okay by contest or site representative. Once paperwork has been completed by the director and CM, your group will have one hour to rehearse. *Groups will need to remove and store scenery in the assigned space (as well as spike and strike the entire unit set) by the end of the official rehearsal time.*

Stage/Lighting/Sound/ etc.

Rock Hill HS has an ETC ION XE lighting board. We have a 15 Area lighting plot (see below), with Red, Green, Blue, and Amber LED Stage and Cyc washes preprogrammed and LED color changing instruments from the front, top and cyc. If desired, please email Denton Davies at dtdavies@prosper-isd.net for information on sending lighting cues.



We have a white cyc or black curtain upstage for your use. There is no cross over space between the cyc and back wall. There is a crossover through a back hall adjacent to the back of the stage if needed.

<p>Stage Dimensions: Proscenium Length - 49'0" Proscenium Height - 21'0" Apron Depth - 6'0" Stage Depth - 32'0" (proscenium to back wall)</p>	<p>Other dimensions: Apron to MS Traveler - 14'0" Apron to Back Traveler- 31'0" Apron to Cyc - 32" Apron to Back Wall - 38'0" Stage Aisles into House - 42'0"</p>	<p>Leg Depths: (from the back of the proscenium) DS legs - 6'0" Mid legs - 14'0" US legs - 23'0"</p>
---	---	--

If you choose to use the house sound system, RHHS has a Yamaha TF3 sound board and will provide a USB-C connection. There is no CD player in our system. Headsets are available in FOH, SR, SL, and USC.

Unit Set

Rock Hill HS will provide the basic unit set, but no door or window units available. If you plan on using any unit set doors or windows in your show, all unit set pieces must be available prior to the first rehearsal, so please make arrangements to deliver any additional set pieces to the school before the first scheduled rehearsal. Contact a site representative to coordinate this if needed.

Strike/ Loadout

Companies will be loading out immediately following their performance. All groups will be notified when critiques are ready to begin. Please make sure that you leave your dressing room as clean as it was when you arrived and have everything belonging to your company out of the space prior to the critiques/awards.